

THE BUSHNELL



BELDING THEATER

166 Capitol Avenue

Hartford, CT 06106

The Bushnell Box Office:
Phone (860) 987-5900

Administrative Offices:
Phone (860) 987-6000

CONTACT INFORMATION

PROGRAMMING

Patrick Langevin

Associate Vice President, Programming

Phone: 860-987-6073

E-mail: PLangevin@Bushnell.org

Tom Sessa

Director, Programming

Phone: 860-987-6039

E-mail: TSessa@bushnell.org

FRONT OF HOUSE / MERCH

Catt Gruszka Vadala

Senior Manager, Front of House

Phone: 860-987-6033

E-mail: CGruszka@bushnell.org

EVENT SERVICES

Charlie Myers

Senior Director, Events & Patron Services

Phone: 860-987-6024

E-mail: CMyers@bushnell.org

PRODUCTION

Michael Sivo

Technical Director

Phone: 860-987-6063

Cell: 860-819-1347

E-mail: MSivo@bushnell.org

Dani O'Callahan

Senior Coordinator, Production

Phone: 860-987-6057

E-mail: DOCallahan@bushnell.org

MARKETING & PROMOTION

Alex Page-Hatley

Director, Marketing

Phone: 860-987-6082

E-mail: APageHatley@bushnell.org

BOX OFFICE

E-mail: BoxOfficeManagers@bushnell.org

*This will go to all of our Box Office Managers
and ensure the most prompt response*

THE BUSHNELL CENTER FOR THE PERFORMING ARTS

Belding Theater

The interior of the 908-seat Belding Theater is intimate and luxurious, with a decorative painted ceiling, generous use of wood and rich colors and textures. No seat in the theater is more than 75 feet from the stage. Above the orchestra level is a mezzanine that includes private box seating.

THEATER CAPACITY

Total: 908

Orchestra:	617 (deduct 51 seats if orchestra uses Pit)
Accessible/Wheelchair:	6
Sensory Impaired:	6 (Held in the 1 st two center rows)
Companion Seating:	22
Mezzanine:	245 (including 2 Private Boxes, 6 seats each)
Accessible/Wheelchair:	4
Companion Seating:	8

STAGE

Proscenium:	Width 47', height 33'
Deck:	Phenalex (industrial masonite), flat, 2'-11" above orchestra floor. Black in color
Specifications:	Centerline to off stage right wall 46' (not stage left); SR clear fly space 37' Centerline to off stage-left locking rail 42'; SL clear fly space 37' Stage depth 42': taken from proscenium to upstage wall Floor to grid 70' - uniform load of 50lbs per square foot Pipe run 63'-2" Single purchase counterweight system with 75,000lbs available 55 undedicated line-sets, spaced @ 6" o/c, with 6 lines each 2 dedicated motorized line sets for acoustical shell 14' arbors, 2000lb capacity 30 additional sheaves and rope available for single line spotting

Dual locking rail stage left deck and raised fly-floor @ 33' Pin-rail raised stage right @ 33' with upstage crossover to fly-floor. Apron edge to proscenium 3'-6"

Pit Elevator: At stage level pit extends 10'-9" at center of crescent-shaped apron
At auditorium level it will accommodate 51 seats
At orchestra pit level it will accommodate approx. 40-60 musicians

Travel range is from stage level down 2'-11" to orchestra level, from stage level down 9' to pit level, from stage level down 14'-9" to basement and trap area

Elevator: 1 backstage, 12' x 10'-10"

Loading Doors: At loading docks 2 @ 8'-4" w x 10' h inside dimension

Stage Door: 8' w x 20' H upstage right corner at loading dock

Loading Docks: (2) Access from Clinton Street (east side) will accommodate 53' trailer

Ramp: There is a ramp that runs parallel to the loading dock for musicians who have larger instruments to have direct access to the stage.

Draperies: Front valence and grand drape

7 sets black velour legs (flat)	30'H x 12'W
6 black velour borders (flat)	12'H x 60'W
10 black velour tabs (flat)	30'H x 8'W
2 black velour bi-part traveler	30'H x 60'W
1 Muslin Cyclorama	30'H x 60'W
1 Sharkstooth scrim (black)	30'H x 60'W
1 Sharkstooth scrim (white)	30'H x 60'W

Risers:

24 – 32"x 8'x 8"	4 – 4'x 8'x 8"
20 – 32"x 8'x 16"	4 – 4' x 8'x 16"
14 – 32"x 8'x 24"	25 – 4'x 8'x 24"

15 – 4' x 8' x 32" 1 each 4'x 4'x (8"),(16"),(24")

Concert Shell: Approximately 1000 square feet, can accommodate approximately 75 musicians

Music Stands/

Chairs: 75 music with clip lights,100 symphony type chairs
additional folding chairs available.

Pianos: 1 - 9' Steinway D
1 – Yamaha C5SE 6'7"
2 – Yamaha U1SE 48" Upright

STAGEHANDS

IATSE, Local 84

Jason Philbin, Business Agent

Office: (860) 233-8821, Cell: (860) 478-6638

Minimum call: 3-man crew (Carpenter, Props, Electrician)

4 hours load in, performance, 4 hours load out

LIGHTING

Service: (1) 100 amp 3-phase disconnect located downstage left
(1) 100 amp 3-phase disconnect located downstage right
(2) 400 amp 3-phase disconnect located stage right wall
(1) 400 amp + (1) (200 amp clean) 3-phase disconnect in loading dock area

Circuits:

FOH (all stage pin connectors)

Projection booth (1) 20amp

Far catwalk (12) 20 amp circuits

Near catwalk (27) 20 amp circuits

Far box boom S/L (12) 20 amp circuits + (1) 50 amp circuit

Near box boom S/L (6) 20 amp circuits

Far box boom S/R (12) 20 amp circuits + (1) 50 amp circuit

Near box boom S/R (6) 20 amp circuits

Balcony rail (12) 20 amp circuits + (1) 50 amp circuits

STAGE (all stage pin connectors)

Overhead drops + fixed wall boxes (198) 20-amp circuits + (3) 50 Amp circuits

Trap room (3) 20-amp circuits

FOH Units:

(12) Source Four 10 degree / Far catwalk

(58) Source Four 19 degree / 28 near catwalk, 12 each far box boom

(4) Source Four 26 degree / 2 each near box boom

(2) ETC Color source spot 26 degree / 1 each near box boom

(2) ETC Color source spot 19 degree / 1 each near box boom

Additional Units Inventory:

Full fixtures

(2) Source Four 19 degree

(30) Source Four 26 degree

(40) Source Four 36 degree

(13) Source Four 50 degree

(48) Par 64

(7) Far Cyc 3-circuit

(6) Color source 72 series 1

(7) Color source 72 series 2

Lenses

(1) 10 degree

(24) 26 degree

(4) 36 degree

(17) 50 degree

(0) 19 degree

Dimmers:

ETC SENSOR- dimmer per circuit (276) 2.4k + (6) 5k d

House lights are controlled by ETC Paradigm with touch screens located DS left & right & in lighting booth

Light Board: ETC ION XE-20 (12K with 2x20 fader wing)
MacBook Pro with Nomad as back-up/ designer remote

Follow-spots: (2) Lycian Super Stars 1200 watt HMI

Concert Lighting: (68) par 56 units arranged in 5 cross stage rows

Contact: Head Electrician, Joe Gates (860) 987-5942 cell: (860) 608-8463

SOUND

The Bushnell Front of House Sound System is in excellent condition including a high-quality PA capable of reproducing music clearly and without distortion at 115db at the mixing position and with even coverage throughout the full audience areas.

Main Console: Allen & Heath C3500 D-live console w/CDM32 Mix rack w/ Dante card.

DX-168 stage box

IP8 Controller

3x ME 1 Personal mixers

16 Channel input

4 Channel output on USL & USR corners

3x shielded CAT 6 snake from audio booth to SR

2x shielded CAT 6 snake from audio booth to FOH mix position

3x shielded CAT 6 snake from FOH mix position to SL

4x Amplified monitor mixes available

6x non-amplified monitor mixes available

4x flown EAW JF8b0 over-stage monitors on separate mix

Power Service: (1)100 amp 3-phase located downstage left

(1) 60 amp breakout located downstage left

(1) 60 amp breakout located downstage right

(1) 100 amp 3-phase located upstage right wall

House PA: Center Cluster D&B 10 AD (x6)
S/R Proscenium: D&B C7 (x3), C7 sub (x1), B2 sub (x1)
S/L Proscenium: D&B C7 (x3), C7 sub (x1), B2 sub (x1)
Front fill: D&B 8S (x4)
Under balcony: (8) EAW JF80T60
Amplifiers: D&B D12 (x7), QSC 1202 (x4)

Monitors: EAW SM200IH (x6) Passive
EAW JF200E (x4) Passive
EAW JF260Z (x2) Passive
EAW RF129Z (x2) Passive
EAW JF80 (x2) Passive
EW (x4) Active

Microphones: Sure SM 58 (x9)
Sure SM 51 (x5)
Sure BETA SM 52 (x1)
Sure SM 81 (x4)
EV ND/468 (x4)
AKG c414 (x2)
Beyer Dynamic M88 (x1)
Sennheiser 421 (x2)
Direct boxes Klark Teknik DN100 (x6), Whirlwind Hotbox (x1)
Assorted microphone stands and cables

Wireless microphones:
Shure ULXD4Q Dual channel receivers w/8x Shure transmitters
Shure 4x ULXD4 single channel receivers
w 4x Shure G50 Transmitters w Beta 58a capsules
Shure 2x UR4D dual channel receiver's w 4x G1 transmitters w/ Beta
58a Capsules
Shure Twinplex Lavalier (x8) (4 black & 4 tan)
Countryman E6 Head set mics (x6)

Playback / Record:

Tascam CD-450

Tascam CD-RW 900sl (x1)

House Intercom: Clear-Com Free speak 2 Wireless Com system w 6x beltpack & headsets
Also 4 channels of Com available throughout building.

Base unit is Clear Com MS-704

Paging available in all dressing rooms and hallways via Channel D
on wireless Com

Program available in all dressing rooms, hallways and backstage

Microphone stands: Straight:

Chrome large thread (x5)

Black small thread (x11)

Black large thread (x9)

Tripod:

Small tripod w/boom (x5)

Large tripod with boom (x11)

Other Tripod w/boom (x1)

Other:

Drum Claw (x4)

Table top (x8)

Bases:

Atlas rounded small stick (3)

Flat small stick (x6)

Small large stick (x3)

Large stick (x4)

Triangle large stick (x8)

Misc: Q-Sys is used to control sound throughout the building and PA

We also have a digital patch bay through Q-sys for sending and receiving audio signals throughout the building. The digital patch bay does not have built-in pre-amps.

FOH Mix position is located under balcony in rear of house. Footprint is 10' wide x 6' deep. Power, Com and snake 2x shielded CAT 6 that runs to stage left. Lines are available at this position. There is also an 8-channel snake run from FOH mix position to sound booth for sending/receiving analogue lines as well as 3x shielded Cat 6 cables. Sound booth is located at the house left rear of the theater at the mezzanine level. Backstage has anchor audio monitors as well as video monitors bot stage left & right. Wireless frequencies are available upon request

Contact: House Audio Engineer, Scott Bidwell
Work: (860) 987-5941
Cell: (860) 944-1369
Email: liftedtree@aol.com

PROJECTION

Movie Screen: 40' W x 22' H Screen (currently stored on farthest upstage line set)

Projection Locations: Projection booth or balcony rail

Digital Projector: Panasonic PT-RZ120 12k SolidShine

Lenses: ET-DLE150 Panasonic 1.3-2.0:1

ET-DLE250 Panasonic 2.3-3.6:1

ET-DLE350 Panasonic 3.8-5.7:1

ET-DLE450 Panasonic 5.5-8.9:1

Fast fold screen sizes:

9' x 16' (16:9) Front & Rear combo Projection Screen kit with legs

11'3" x 20' (16:9) Front & Rear Combo Projection Screen Kit with legs

13.5' x 24' (16:9) Front & Rear Combo Projection Screen kit (no legs)

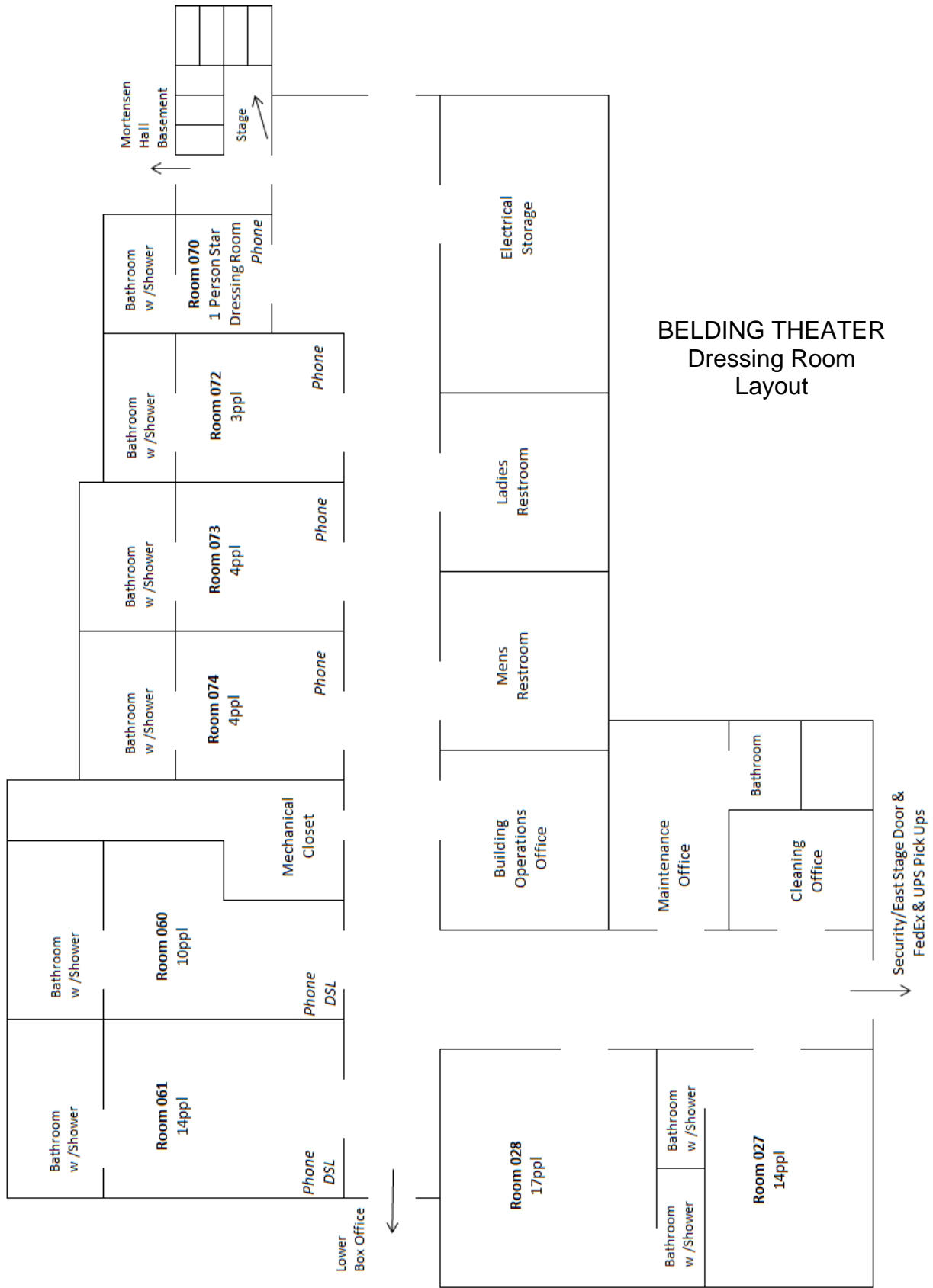
10.5' X 15' (4:3) Front & Rear Combo Projection Screen Kit with legs

Video Switching System: PDS-902 39, Switcher Scaler, with SDI In/Out, Preview Bus, 9 inputs SUS PA248Q 24,24" Preview/Program monitor with Picture by Picture

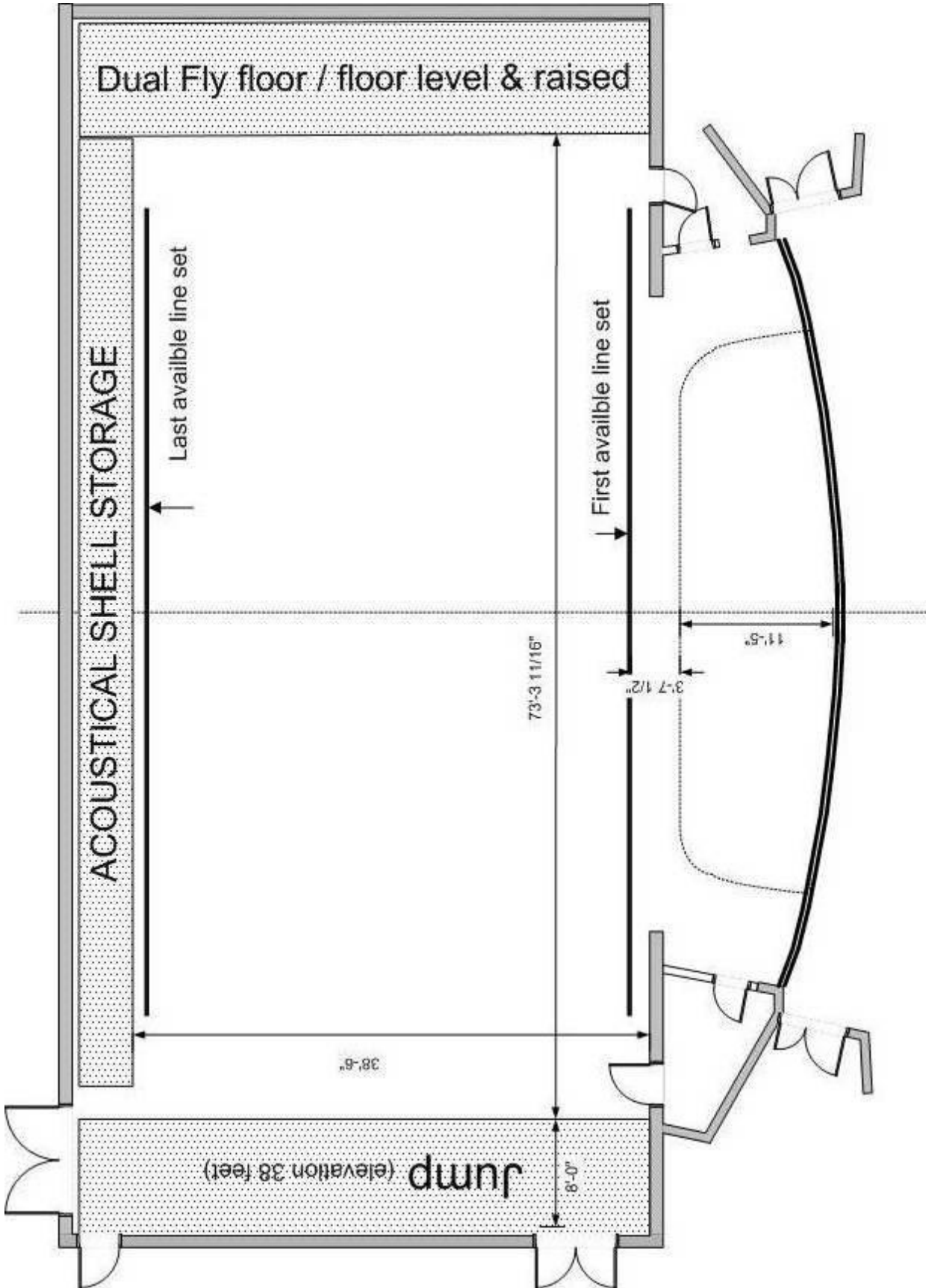
- Projection booth throw distance to stage from approximately 90'
- Projection balcony rail position throw to stage approximately 65'

DRESSING ROOMS

- There are nine (9) rooms to accommodate approximately 80 performers.
- There is an orchestra assembly room with 52 lockers (32 will be full height) with direct access to orchestra pit.
- All dressing rooms have private toilets and showers.
- There is a "Star" Dressing Room.



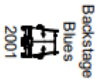
STAGE PLOT



BELDING THEATRE REP PLOT (6/2022)



CROSSOVER LIGHT



Backstage
Blues
2001



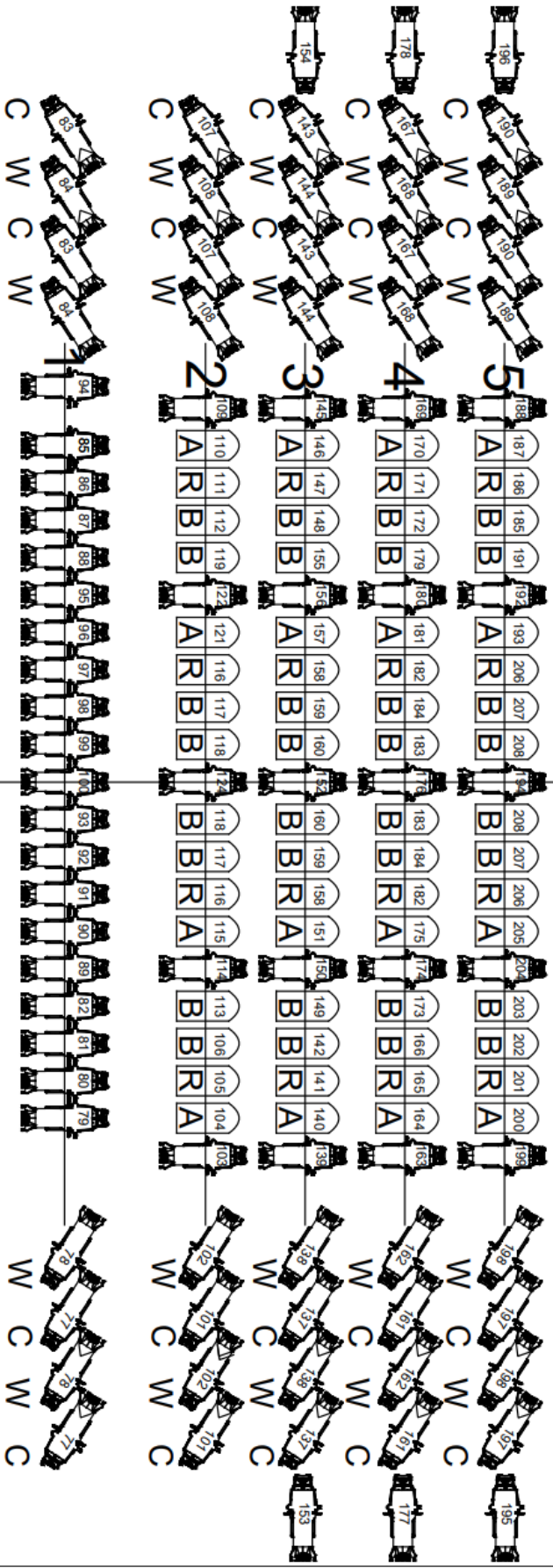
Backstage
Blues
2002

CROSSOVER LIGHT

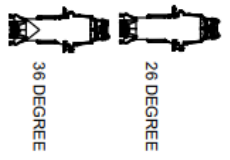


FAR CYCS

R B G	R B G	R B G	R B G	R B G	R B G	R B G	R B G	R B G	R B G	R B G																
227	228	229	227	228	229	230	231	232	230	231	232	233	234	235	233	234	235	233	234	235	236	237	238	236	237	238



ALL PARS ARE WFL



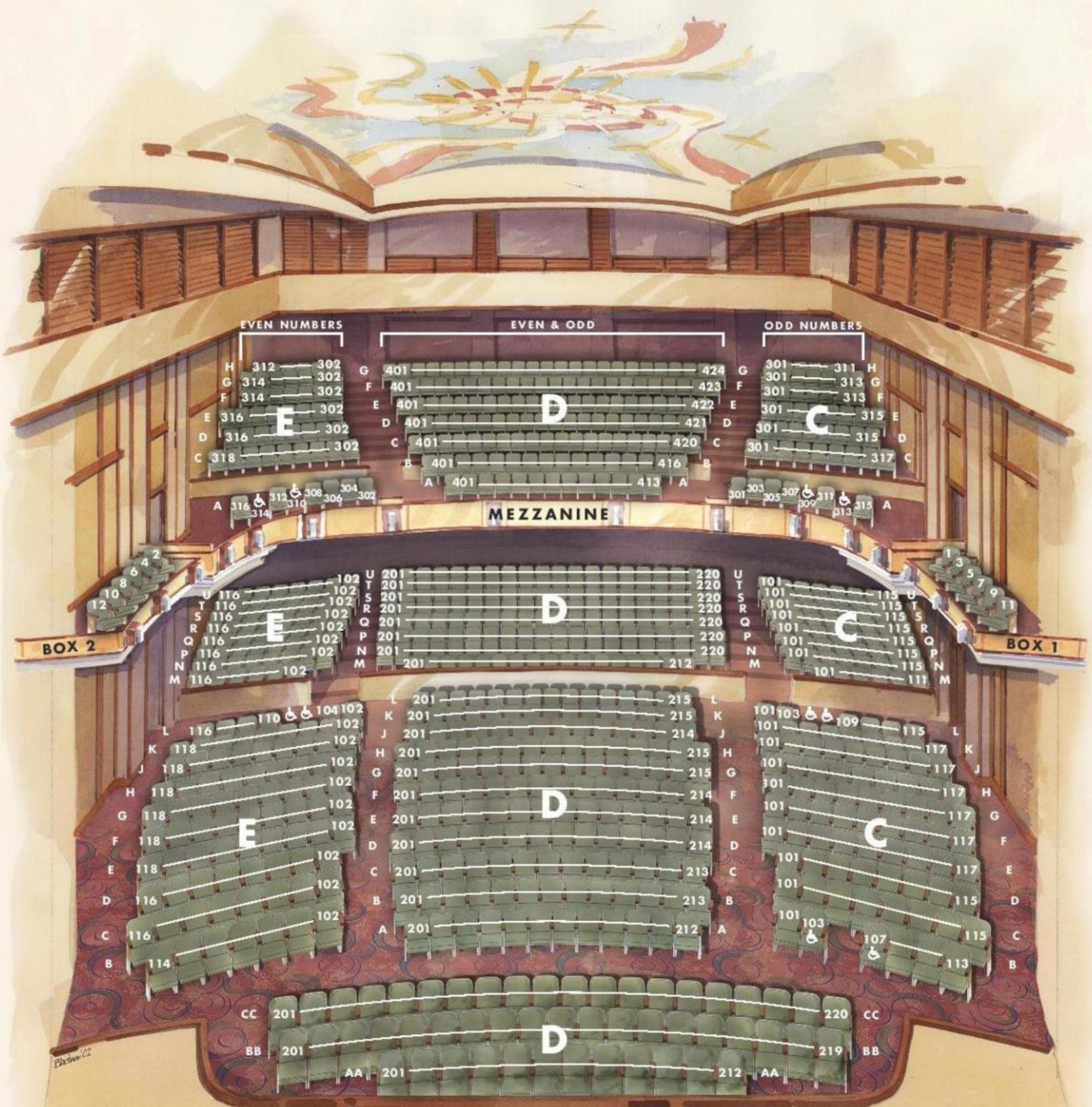
LINESET SCHEDULE

HOUSE LINE SET	SHOW LINE SET	DISTANCE FROM 0'-0"	DESCRIPTION	WEIGHT	NOTES
H/C		0'-0"	HOUSE CURTAIN		36'H x51'H Guillotine with ceter split
1		0'-6"	# 1 house black border		
2		1'-0"	# 1 house black leg		
open					
3*		2'-0"	HOUSE # 1 ELEC		
4		2'-6"			
5		3'-0"			
open					
open					
7		4'-6"	Symphony shell 43'-6''W x12'H x1'-2''D		automated line set
open					
open					
9		6'-0"			
10		6'-6"			
11		7'-0"	# 2 house black border		
12		7'-6"	# 2 house black legs		
13		8'-0"			
14		8'-6"	HOUSE # 2 ELEC		
open					
15*		9'-6"			
16		10'-0"			
17		10'-6"			
18		11'-0"			
19		11'-6"			
20		12'-0"	Border		
21		12'-6"	Black Traveler		Note: 18 feet to procsenium
22		13'-0"	# 3 house black legs		
23		13'-6'			
24		14'-0"	HOUSE # 3 ELEC		
open					
26*		15'-0"			
open					
open					
28		16'-6"	Symphony shell 38'W x12'H x1'-2''D		automated line set
open					
open					
30		18'-0"	# 4 house black border		
31		18'-6"	# 4 house black legs		
32		19'-0"			
33*		19'-6"	HOUSE # 4 ELEC		
open					
34		20'-6"			

35		21'-0"	Black Traveler		
36		21'-6"			
37		22'-0"			
38*		22'-6"			
39		23'-0"			
40		23'-6"			
41		24'-0"	# 5 house black border		
42*		24'-6"	# 5 house black legs		
43		25'-0"			
44		25'-6"	HOUSE # 5 ELEC		
45		26'-0"			
46		26'-6"			
47		27'-0"			
48		27'-6"			
49*		28'-0"			
open					
51		29'-0"			
52		29'-6"			
53		30'-0"	# 6 house black border		
54		30'-6"	# 6 house black legs		
open					
55*		31'-6"	house black scrim		
open					
57		32'-6"	FAR CYC LIGHTS		
58		33'-0"			
59		33'-6"			
60		34'-0"			
61		34'-6"			
62		35'-0"	house white cyclorama		
63		35'-6"	house black out drop		
open					
open					
open					
67		37'-6"	Projection Screen (storage)		

BELDING THEATER

THE BUSHNELL CENTER
FOR THE PERFORMING ARTS



ORCHESTRA

STAGE

Orchestra Level: 651
Mezzanine Level: 257
TOTAL: 908