



THE MORTENSEN HALL

**166 Capitol Avenue
Hartford, CT 06106**

**The Bushnell Box Office:
(860) 987-5900**

**The Bushnell Box Office FAX:
(860) 987-6080**

**Administrative Offices:
(860) 987-6000**

**Administrative fax:
(860) 987-6070**

ALL INFORMATION SUBJECT TO CHANGE
Last Updated 12/11/2014

CONTACT INFORMATION

THEATRICALS / BOOKING

Ric Waldman
Assistant V.P. of Programs
Phone: (860) 987- 6085
Fax: (860) 987-6070
E-mail: ric_waldman@bushnell.org

RENTALS

Christian Lyhus
Programming Coordinator – Commercial
Phone: (860) 987-6026
Fax: (860) 987-6070
E-mail: christian_lyhus@bushnell.org

Jade Parente
Programming Coordinator – Non-Profit
Phone: (860) 987-6056
Fax: (860) 987-6070
E-mail: jade_parente@bushnell.org

FRONT OF HOUSE

Kate Pierro
Operations Manager
Phone: (860) 987-6084
Fax: (860) 987-6070
Email: kate_pierro@bushnell.org

FACILITY SALES & SERVICE

Paige Abrams
Director of Facility Sales & Service
Phone: (860) 987-6024
Fax: (860) 987-6070
E-mail: paige_abrams@bushnell.org

PRODUCTION

Michael J. Sivo
Technical Director
Phone: (860) 987-6063
Fax: (860) 728-0500
Cellular: (860) 819-1347
E-mail: mike_sivo@bushnell.org

Lanese Foley
Sr. Production Coordinator
Phone: (860) 987-6038
Fax: (860) 987-6070
Cell: (502) 553-0297
E-mail: lanese_foley@bushnell.org

BOX OFFICE

Margaret Rush
Sr. Manager Box Office
Direct Phone: (860) 987-6050
Fax: (860) 987-6080
E-mail: margaret_rush@bushnell.org

MARKETING & PROMOTION

Beth Hyland
Director of Marketing and Sales
Phone: (860) 987-6082
Fax: (860) 987-6070
E-mail: beth_hyland@bushnell.org

THE BUSHNELL CENTER FOR THE PERFORMING ARTS
Mortensen Hall

The striking art-deco interior of the 2,799-seat Mortensen Hall stands in contrast to its conservative exterior. The Bushnell is the first performing arts center outside of New York to receive the Best of Broadway Award in 1994. The center panel of the ceiling in Mortensen Hall is the largest hand-painted ceiling mural in the United States entitled Drama painted by Barry Faulkner in 1929 with a group of Prix De Rome artists.

THEATER CAPACITY

Total: 2799

Orchestra:	1117 deduct 77 seats if orchestra pit is used
Mezzanine:	988
Balcony:	652
Accessible/Wheelchair:	8
Sensory Impaired:	6 (Held in 1 st two center rows)
Companion Seating:	28

STAGE

Proscenium:	Width 47', height 28', depth 39'
Deck:	Wood, flat, 3'6" above orchestra floor
Specifications:	Center-line to off stage-right wall 37'; SR clear fly space 30' SR fly rail raised 24' floor to fly floor Center-line to off stage-left clear fly space 35', additional SL Wing space to wall 23' SL overhead clearance 30'-0' Apron edge to proscenium 2'1"; Foots to rear wall 41' Floor to grid 68'; Pipe run 62' Counterweight loading on grid/52,000 lbs available 52 line sets, hemp sets and single lines also available
Pit Elevator:	At stage level pit extends 13'11" at center of crescent-shaped apron At auditorium level it will accommodate 77 seats At orchestra pit level it will accommodate approximately 45 musicians Travel range is from stage level to 14' below stage to wardrobe room and storage area
Annex Elevator:	8' x 5', access to understage and stage.
Loading Doors:	Upstage center 9' wide x 18' high, Stage left - 9' x 20', Stage right - 9' x 20'

Loading Docks: Access from Trinity Street (west side), will accommodate two 45' trailers, at stage level, door 8' x 10'.

Drapes: Front valence and grand drape (Maroon in Color)
Blue cyclorama (30' x 60')
White Cyclorama (30 x 60')
Black Scrim (30' x 60')
White Scrim (30' x 60')
Full Stage Black Velour Drop 2 pieces (30' x 30' each)
6 sets of Black Velour legs (15' x 30') and 6 Matching Borders (12'x 60' and 2 - 6' x 46')

Risers: 24 - 32" x 8' x 8" 4 - 4' x 8' x 8"
24 - 32" x 8' x 16" 4 - 4' x 8' x 16"
6 - 32" x 8' x 24" 36 - 4' x 8' x 24"
24 - 4' x 8' x 32"

Concert Shell: Approximately 1500 square feet, accommodates approximately 120 musicians, overhead white lighting, converts to half and quarter (recital) shell

Music Stands/
Chairs: 100 music stands with clip lights, 120 chairs

Pianos: 1 - 9' Steinway D
1 – Yamaha C5SE 6'7"
2 – Yamaha U1SE 48" Upright

STAGEHANDS
IATSE, Local 84

Michael Sivo, Technical Director
860-987-6063
mike_sivo@bushnell.org

Bill Philbin, Business Agent
Office: (860) 233-8821, Fax: (860) 233-8827
Head Carpenter, Mike Sullivan Jr. (860) 987-5948

*Minimum Call: 5-man crew (Carpenter, Props, Electrician, Fly, C/L)
4 hours in, performance, 4 hours out*

LIGHTING

Service: (2) 400-amp three-phase disconnects on each side of the stage.
Downstage left and right.
Additional 225-amp. upstage left and (2) 200-amp. Upstage right in loading
dock annex

Circuits:

FOH

Ceiling coves 16
Balcony Rail 32
Box Booms 12 per side, 24 total

STAGE

Line set #4 18
4-4 circuit drops SL 16
4-4 circuit drops SR 16
4-12 circ. boxes SR 48
96 fixed circuits (48 stage left, 48 stage right)
16 term. circuits (8 stage left, 8 stage right)
All of the above circuits are 2.4 K

FOH Units:

(18) Source Four, 10 Degree in ceiling cove positions
(16) Source Four, 19 Degree in box boom positions
(4) Source Four, 26 Degree in balcony rail position

Additional Units:

(18)-Source Four, 26 Degrees (24) Par 64 wide
(18)-Source Four, 36 Degrees (26) Par 64 Medium
(16) 6x16 1k Ellipsoidal
(six sections) 12- lamp R-40 Strips 300 Watt 4- circuits

Dimmers:

ETC SENSOR-dimmer per circuit 288 2.4K dimmers

Light Board: ETC INSIGHT 108--108 channel/288 dimmer capacity
Circuits 1-72 are wired to A/B switch box, enabling
touring shows to use front of house circuits with road
light board. Also DMX Port DSR to access house dimmers

Follow-spots: (3) - Strong Xenon Super Troupers. 2,000 Watt.

Contact: Head Electrician, Tom Burns (860) 987- 5922

SOUND

The Bushnell Front of House Sound System is in excellent condition including a high quality PA capable of reproducing music clearly and without distortion at 110db at the mixing position and with even coverage throughout the full audience areas.

Main Console:	Midas Heritage 2000, 32 Channel input, 2 Channel output, 12 sub-groups, 12 aux. sends, stereo output, 8 Matrix outputs
Equalizer:	4 channels, Klark-Teknik 1/3 octave EQ's, 8 Channels, Ashley Protea W/remote
Auxiliary Console:	Mackie 1202 VLZ
Compression:	4Channel DBX 166
Effects:	Lexicon LXP15 II , Yamaha SPX 1000
Powered Monitors:	(4) Anchor AN-1000
Power Service:	200 amp, 3-phase transformer. Isolated disconnect. Stage Right
Speaker Towers:	2 towers each containing - (1) UM-1 - for loge area (2) UPA-1 - for vocals (2) MSL-2 - for music (1) 650 - for subs
Other Speakers:	
Orchestra Fill:	(10) UPM-1
Balcony:	(8) UPM-2
Front Fill:	(5) UPM-1
Equalizers:	(7) Meyer CP-10
Cluster:	(6) MSL-4
Delays:	(7) BSS TCS-804
Amplifiers:	(12) Crown Macrotech's
Monitors:	(2) UPA-1A (4) EvxW12 Floor Wedges
Microphones:	(5) Shure SM 57, (6) Shure SM 58, (3) Shure Beta 58, (1) Shure UP 88 Stero Mic (8) AKG C-535, (3) Sennheiser 421, (4) Audio Technica Uni-Point Podium Mics

Microphones
 Wireless: (4) Shure UHF Handhelds w/Beta 87 Capsules
 (4) Sony Lavaliers w/MKE2 Microphones

Cassette Decks: (1) Tascam 112
 (1) Nakamichi MR-2

CD Player: (1) Tascam CD-450

DAT Deck: (1) Tascam DA-45 HR
 House Intercom: (8) Headsets and Belt Packs
 CS-200 2-channel main station
 4 stations HME Wireless Com

Projection Booth: 8 Dedicated Lines

Video Monitor: FOH monitors located Stage Right and Stage Left
 2 monitors on fly floor
 Backstage paging system available.

Contact: Head Sound, Brian Kulvete (860) 987-5928

DRESSING ROOMS

- All stage-right, with program feed and paging available

Stage level: Green Room/ Star Dressing Room with private lavatory and shower.
 (DSL / Phone Available, room has a TV, small fridge and microwave))

Conductor's Room/ Stage Manager's room with private lavatory
 (Phone Available, very small room)

2nd Floor: 202 1 room, 5-person (DSL/ Phone Available)
 203 1 room, 4-person (DSL/ Phone Available room has sofa & small fridge)
 204 1 room, 3-person (Phone Available)
 205 1 room, 3-person
 206 1 room, 3 person
 1 lavatory with shower

3rd Floor: 202 1 room, 5-person
 303 1 room, 4-person
 204 1 room, 3-person
 205 1 room, 3-person
 206 1 room, 3 person
 1 lavatory with shower

4th floor: 1 room, 10-person with sink
1 room, 14-person or wardrobe room with sink
1 lavatory with shower

5th floor: 1 room, 14-person or wardrobe room
1 lavatory

Under stage: Wardrobe room with 3 washers, 2 dryers and deep sink
Dressing room 10-person with sink (Wig Room)

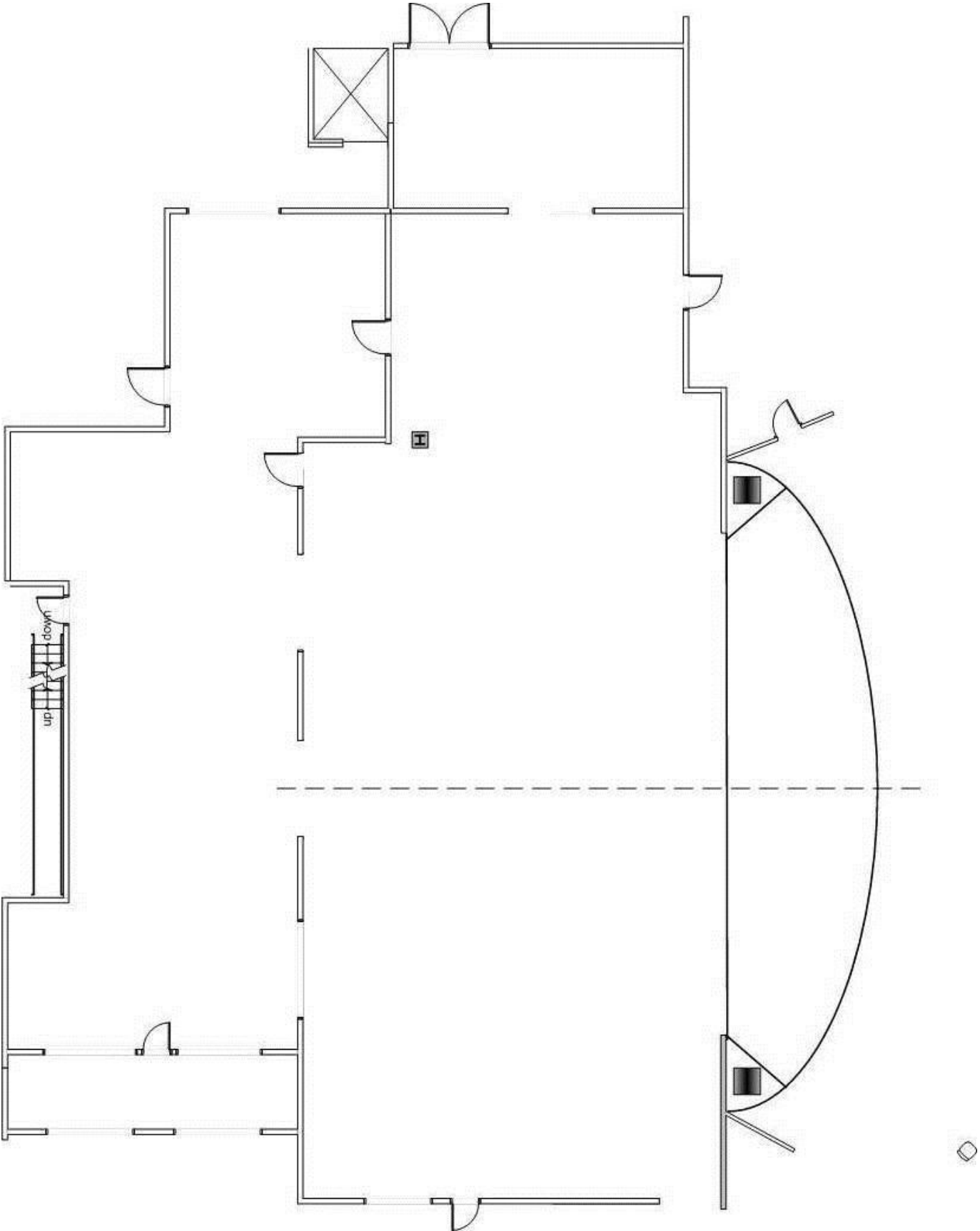
FILM PROJECTION

Movie Screens: 1) 22' x 41' with
Projectors: 1 - 16mm projector: Eastman, Model 25B with Christie
2000-watt xenon lamps
2 - 35mm projectors: Century, Model HH with ORC
4000-watt xenon lamps

Projection Platform: Off Front of Mezzanine
9' long x 3'4" wide
Distance from Spotlight/Booth to Plaster Line: 157'

- *Projection booth distance to stage approximately 200'*

STAGE PLOT



LINE SCHEDULE

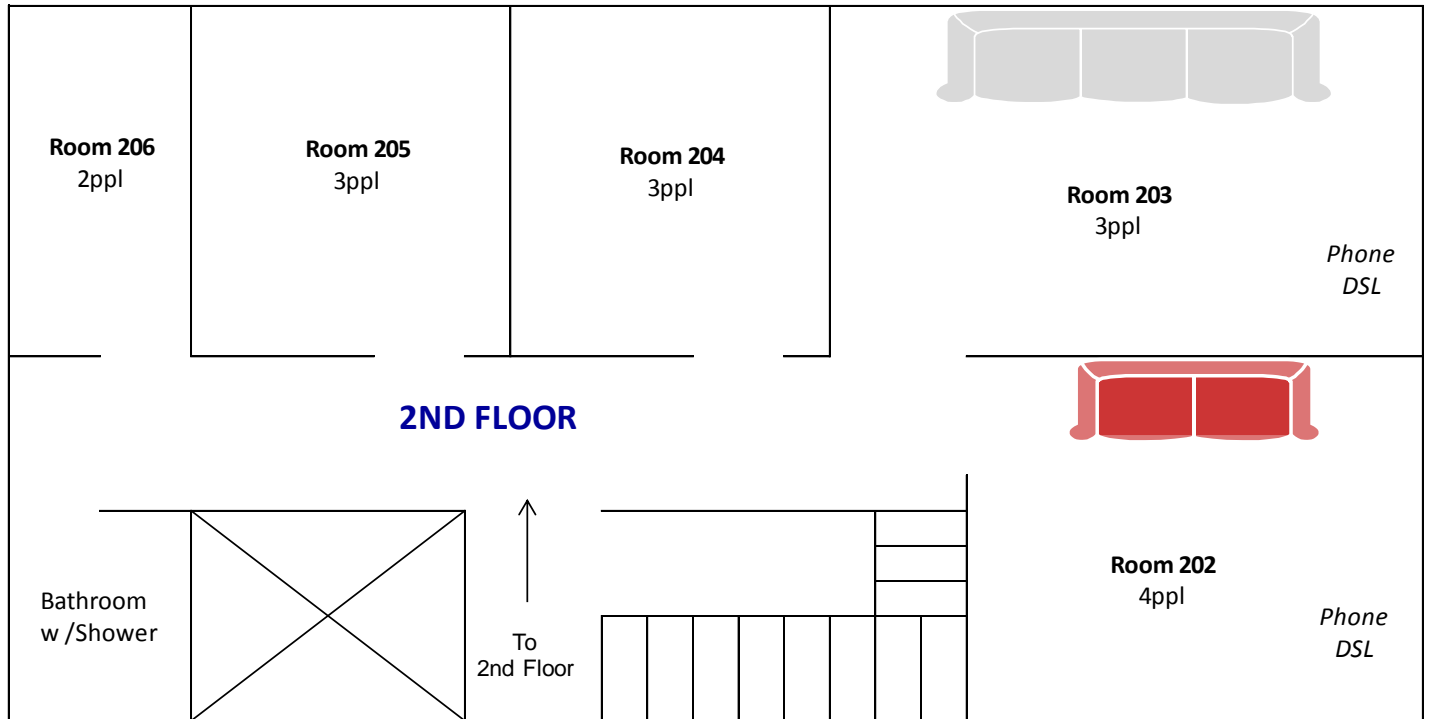
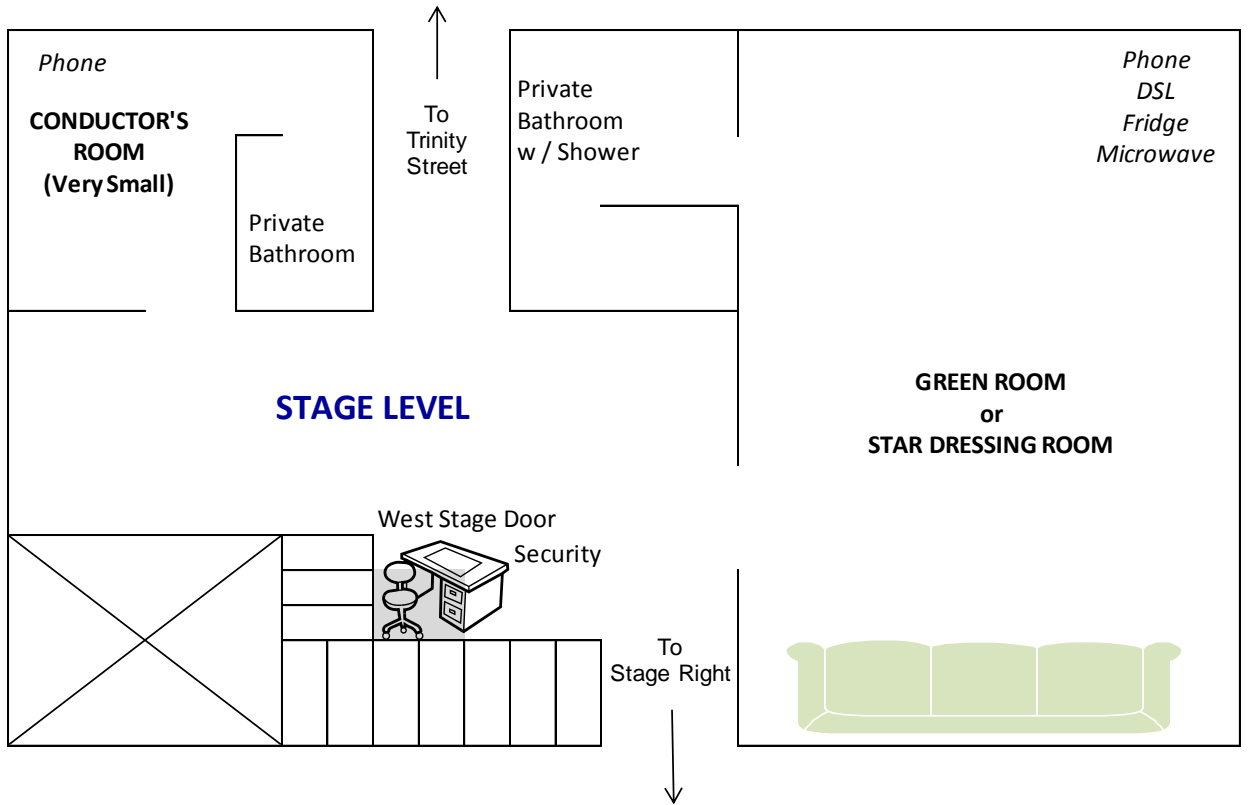
HOUSE	SHOW	DISTANCE	DESCRIPTION	WEIGHT	NOTES
LINE SET	LINE SET	FROM 0'-0"			
H/C		1'-0"	HOUSE CURTAIN		
1		1'-7"	<i># 1 Symphony lights</i>		
2		2'-4"	<i>house portal legs</i>		
3	;	3'-0"			
4		3'-8"	#1 HOUSE ELECTRIC		MAX. WEIGHT 600 lbs
5		4'-4"			
6		5'-0"			
7		5'-8"	#1 SYMPHONY SHELL		
8		6'-4"			
9		7'-0"	<i>#1 house border</i>		
10		7'-8"	<i>#1 house legs</i>		
11		8'-4"			
12		9'-0"			
13		9'-8"			
14		10'-4"	<i># 2 Symphony lights</i>		
15		11'-0"			
16		12'-4"			
17		13'-0"	<i>#2 house border</i>		
18		13'-8"	<i>#2 house legs</i>		
19		14'-4"	#2 SYMPHONY SHELL		
20		15'-0"			
21		16'-4"			
22		17'-0"			
23		17'-8"			
24		18'-4"			
25		19'-0"	<i># 3 Symphony lights</i>		
26		19'-8"	<i>house border</i>		
26A		20'-4"	<i>house legs</i>		
27		21'-0"			
28		21'-8"			
29		22'-4"			
30		23'-0"	#3 SYMPHONY SHELL		
31		23'-8"			
32		24'-4"			
33		25'-0"			
34		25'-8"	<i>house border</i>		
35		27'-0"	<i>house legs</i>		
36		27'-8"	<i># 4 Symphony lights</i>		
37		28'-4"	<i>house black drop</i>		
38		29'-0"			

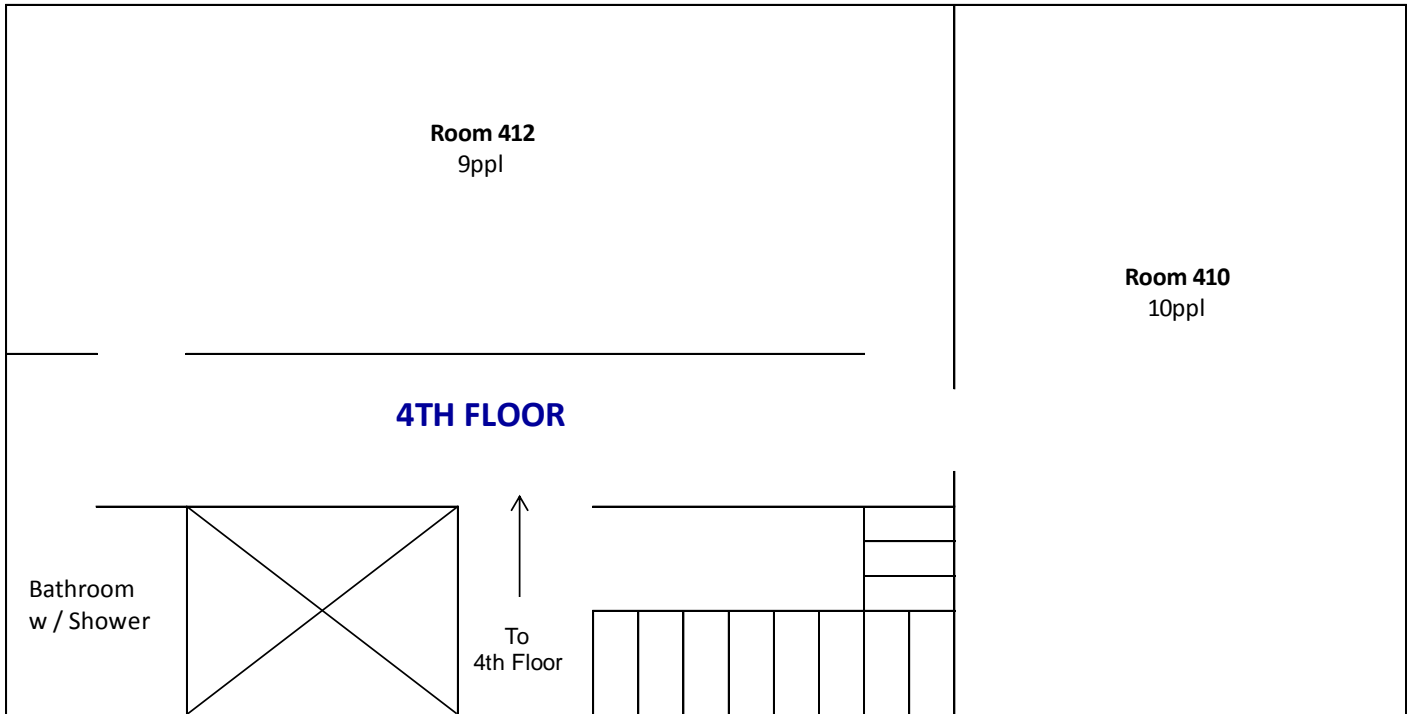
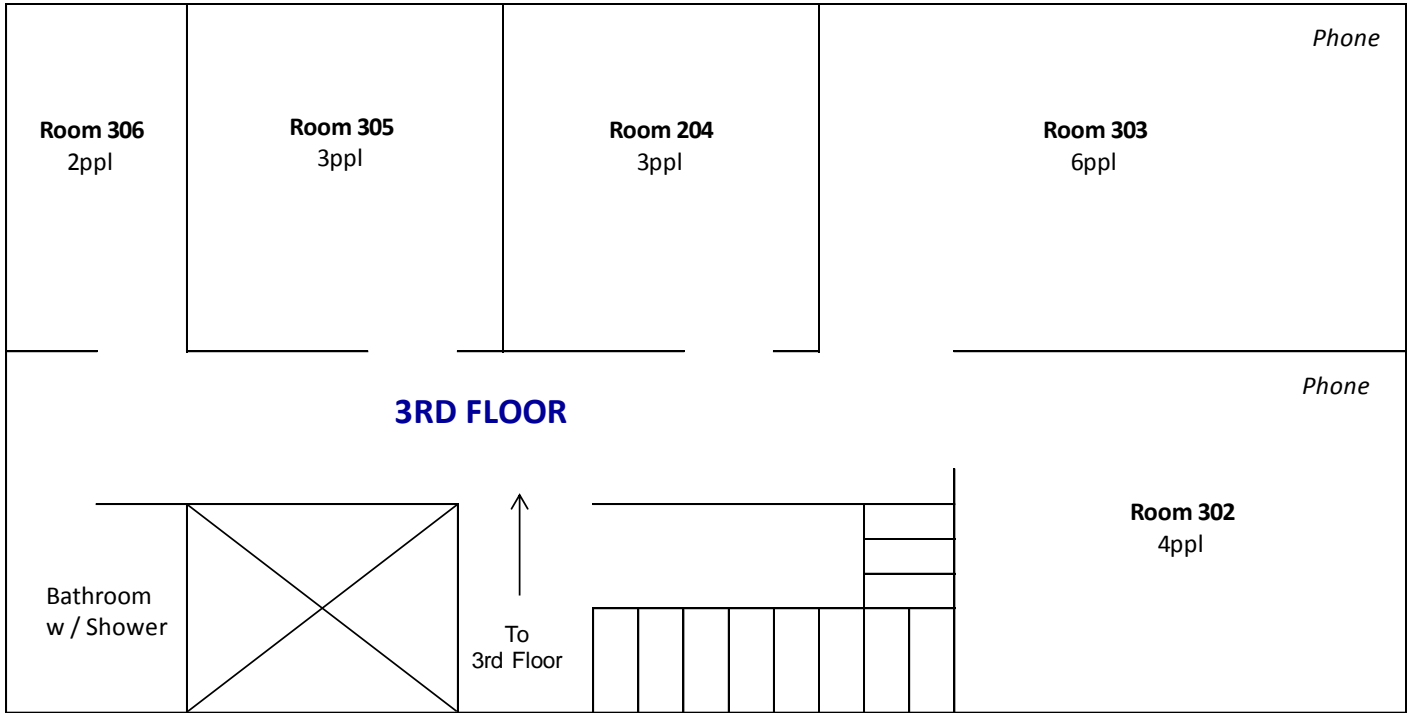
39		29'-8"		
39A		30'-4"		
40		31'-0"		
41		31'-8"	#4 SYMPHONY SHELL	
42		32'-4"		
43		33'-0"		
44		33'-8"		
45		34'-4"		
46		35'-0"		
47		35'-8"		
48		36'-4"		
49		37'-0"		
50		37'-8"	Traveler Track (storage)	
51		38'-4"	Movie Screen (storage)	4 line set only/ 48' pipe lenth

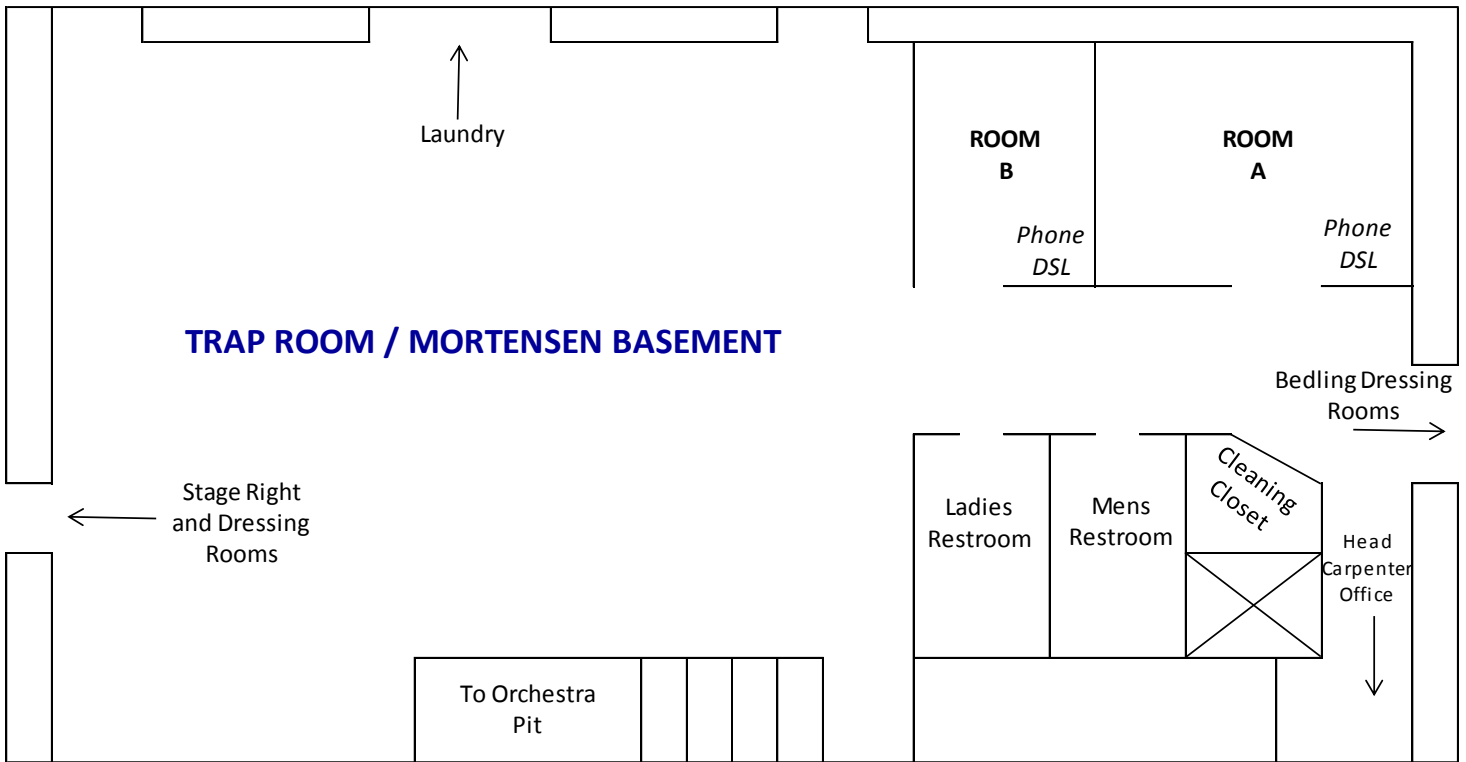
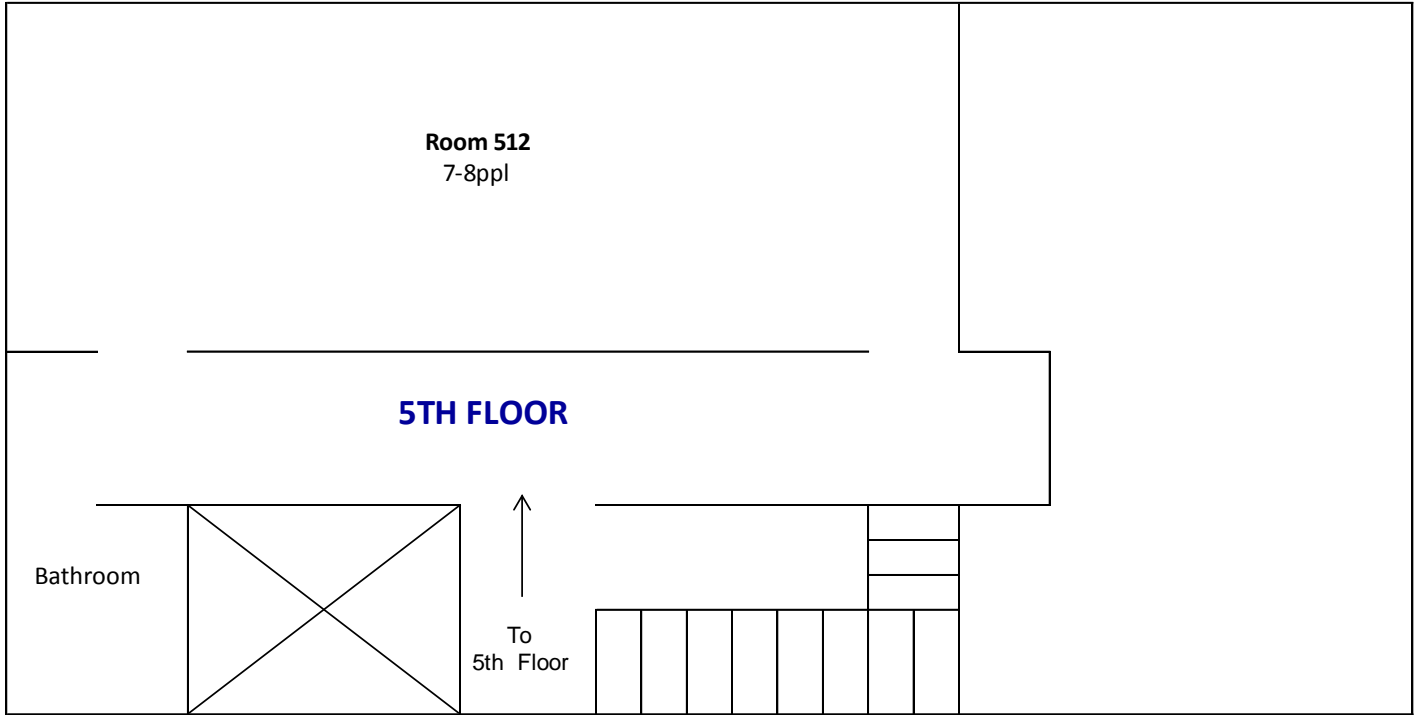
NOTE : 0'-0" MEASUREMENT IS TAKEN FROM PLASTER LINE @ SMOKE POCKET

1. Symphony shells & Lights can be moved, or, if needed, taken down and stored.
2. Single spot lines and sheaves are available.
3. Movie screen can be moved but must be stored in the air.
4. The counter weight system is double purchase with 65,000 lbs. of available counterweight.
5. Arbor capacity's are all 1000 lbs at pipe end.
6. Lenth of system pipe 60'-0" and all schedule # 80.
7. Run of pipe is 62'-0"

MORTENSNE HALL
Dressing Room
Layout

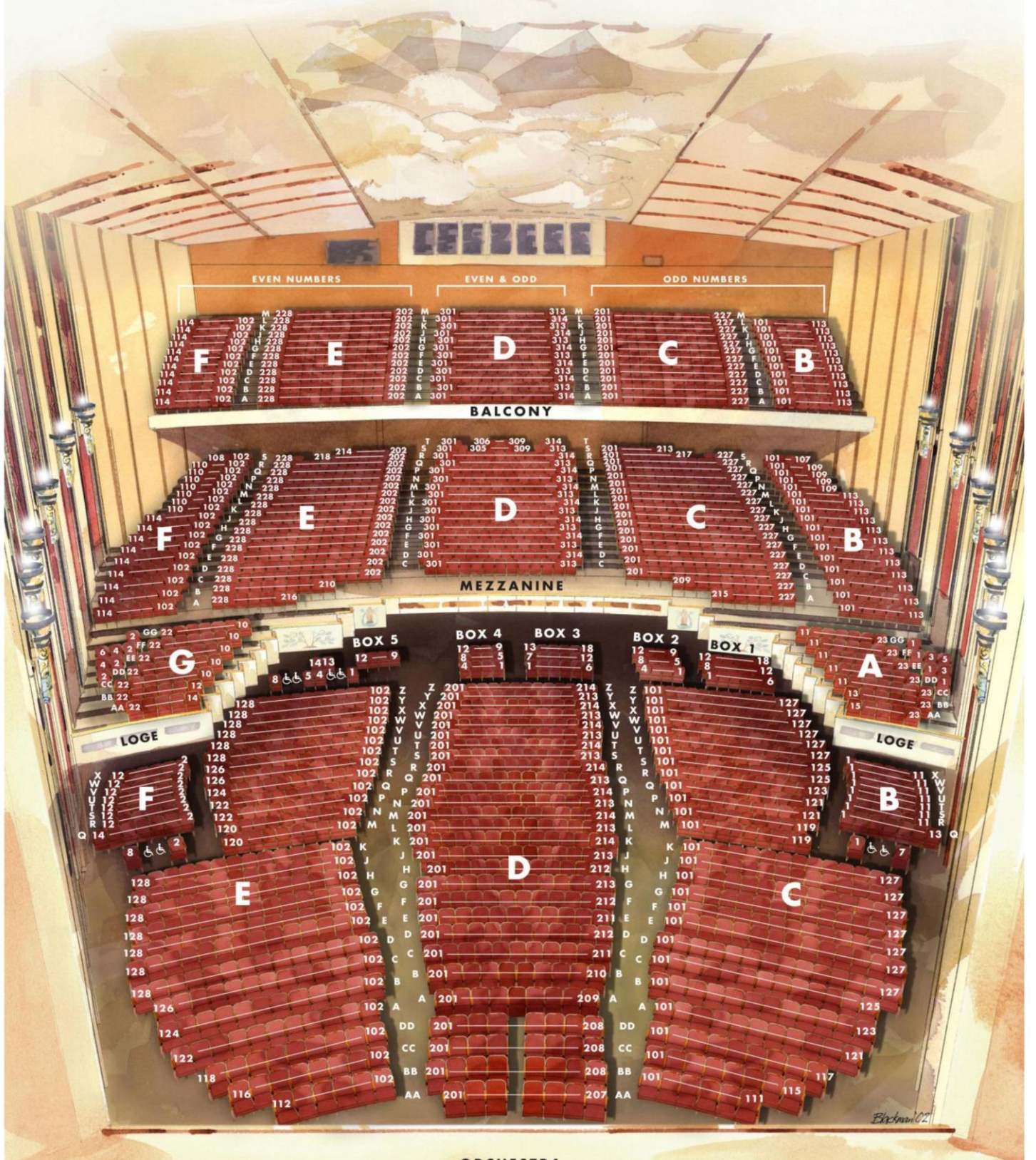






WILLIAM H.
MORTENSEN HALL

THE BUSHNELL CENTER
 FOR THE PERFORMING ARTS



Orchestra Level: 1,159

Mezzanine Level: 988

Balcony Level: 652

TOTAL: 2,799

