



Mortensen Hall

166 Capitol Avenue

The Bushnell Box Office:

Phone (860) 987-5900

Fax (860) 987-6080

Administrative Offices:

Phone (860) 987-6000

Fax (860) 987-6070

ALL INFORMATION SUBJECT TO CHANGE
Last Updated 1/9/2018

CONTACT INFORMATION

THEATRICALS / BOOKING

Ric Waldman

V.P. of Programs

Phone: (860) 987- 6085

Fax: (860) 987-6070

E-mail: rwaldman@bushnell.org

PROGRAMMING/ RENTALS

Tom Sessa

Director of Programs

Phone: (860) 987-6039

Fax: (860) 987-6070

E-mail: tsessa@bushnell.org

FRONT OF HOUSE / MERCHANDISE

Kate Pierro

Operations Manager

Phone: (860) 987-6084

Fax: (860) 987-6070

E-mail: kpierro@bushnell.org

FACILITY SALES & SERVICE

Charlie Myers

Director of Facilities/Ticketing Sales & Service

Phone: (860) 987-6024

Fax: (860) 987-6070

E-mail: cmyers@bushnell.org

PRODUCTION

Michael J. Sivo

Technical Director

Phone: (860) 987-6063

Fax: (860) 728-0500

Cell: (860) 819-1347

E-mail: msivo@bushnell.org

Sam Burke

Production Coordinator

Phone: (860) 987-6057

Fax: (860) 987-6070

E-mail: sburke@bushnell.org

BOX OFFICE

Margaret Rush

Sr. Manager Box Office

Direct Phone: (860) 987-6050

Fax: (860) 987-6080

E-mail: mrush@bushnell.org

MARKETING & PROMOTION

Beth Hyland

Director of Marketing

Phone: (860) 987-6082

Fax: (860) 987-6070

E-mail: bhyland@bushnell.org

Paul Marte

Communications Manager

Phone: (860) 987-6068

Fax: (860) 987-6070

E-Mail: pmarte@bushnell.org

THE BUSHNELL CENTER FOR THE PERFORMING ARTS
Mortensen Hall

The striking art-deco interior of the 2,799-seat Mortensen Hall stands in contrast to its conservative exterior. The Bushnell is the first performing arts center outside of New York to receive the Best of Broadway Award in 1994. The center panel of the ceiling in Mortensen Hall is the largest hand-painted ceiling mural in the United States entitled Drama painted by Barry Faulkner in 1929 with a group of Prix De Rome artists.

THEATER CAPACITY

Total: 2799

Orchestra:	1117 deduct 77 seats if orchestra pit is used
Mezzanine:	988
Balcony:	652
Accessible/Wheelchair:	8
Sensory Impaired:	6 (Held in 1 st two center rows)
Companion Seating:	28

STAGE

Proscenium:	Width 47', height 28', depth 39'
Deck:	Wood, flat, 3'6" above orchestra floor
Specifications:	Center-line to off stage-right wall 37'; SR clear fly space 30' SR fly rail raised 24' floor to fly floor Center-line to off stage-left clear fly space 35', additional SL Wing space to wall 23' SL overhead clearance 30'-0' Apron edge to proscenium 2'1"; Foots to rear wall 41' Floor to grid 68'; Pipe run 62' Counterweight loading on grid/52,000 lbs available 52 line sets, hemp sets and single lines also available FOH rigging points available upon request (typical Phantom format)
Pit Elevator:	At stage level pit extends 13'11" at center of crescent-shaped apron At auditorium level it will accommodate 77 seats At orchestra pit level it will accommodate approximately 45 musicians Travel range is from stage level to 14' below stage to wardrobe room and storage area
Annex Elevator:	8' x 5', access to understage and stage.
Loading Doors:	Upstage center 9' wide x 18' high, Stage left - 9' x 20' Stage right - 9' x 12'

Loading Docks: Access from Trinity Street (west side), will accommodate two 45' trailers, at stage level, door 8' x 10'.

Drapes: Grand drape Maroon in Color (guillotine only with center split)
 White Cyclorama (30' x 60')
 Black Scrim (30' x 60')
 White Scrim (30' x 60')
 2- Full Stage Black Velour Drop 2 pieces (30' x 30' each)
 6 sets of Black Velour legs (15' x 30') and 6 Matching Borders (12' x 60')

Risers:

24 - 32" x 8' x 8"	4 - 4' x 8' x 8"
24 - 32" x 8' x 16"	4 - 4' x 8' x 16"
6 - 32" x 8' x 24"	36 - 4' x 8' x 24"
24 - 4' x 8' x 32"	

Concert Shell: Approximately 1500 square feet, accommodates
 Approximately 120 musicians, overhead white lighting,
 converts to half and quarter (recital) shell

Music Stands / Chairs: 100 music stands with clip lights, 120 chairs

Pianos:

- 1 - 9' Steinway D
- 1 - Yamaha C5SE 6'7"
- 2 - Yamaha U1SE 48" Upright

STAGEHANDS
IATSE, Local 84

Michael Sivo, Technical Director
Office: 860-987-6063
Cell: 860-819-1347
mike_sivo@bushnell.org

Michael Sullivan Jr., Business Agent
 Office: (860) 233-8821, Fax: (860) 233-8827
 Head Carpenter, Mike Sullivan Jr. (860) 987-5948
 Email: Mortensen.HeadCarpenter@bushnell.org

*Minimum Call: 5-man crew (Carpenter, Props, Electrician, Fly, C/L)
 4 hours in, performance, 4 hours out*

LIGHTING

Service: (2) 400-amp three-phase disconnects on each side of the stage.
Downstage left and right.
Additional 225-amp. upstage left and (2) 200-amp. Upstage right in loading
dock annex

Circuits:

FOH

Ceiling coves 16
Balcony Rail 32
Box Booms 12 per side, 24 total

STAGE

Line set #4 18
4-4 circuit drops SL 16
4-4 circuit drops SR 16
4-12 circ. boxes SR 48
96 fixed circuits (48 stage left, 48 stage right)
16 term. circuits (8 stage left, 8 stage right)
All of the above circuits are 2.4 K

FOH Units:

(18) Source Four, 10 Degree in ceiling cove positions 750 watt
(16) Source Four, 19 Degree in box boom positions
(4) Source Four, 26Degree in balcony rail position

Additional Units:

(24)-Source Four, 26 Degrees
(18)-Source Four, 36 Degrees (50) Par 64 Medium

(6) six sections Chroma Q RGBA LED Strip lights

Dimmers:

ETC SENSOR-dimmer per circuit 288 2.4K dimmers

Light Board:

ETC INSIGHT 108--108 channel/288 dimmer capacity
Circuits 1-72 are wired to A/B switch box, enabling
touring shows to use front of house circuits with road
light board. Also DMX Port DSR to access house dimmers

Follow-spots: (3) – Lycian model 1293X- 3K Zenon

Contact: Head Electrician, Tom Burns (860) 987- 5922

SOUND

The Bushnell Front of House Sound System was installed in 2014 and includes a high quality PA capable of reproducing music clearly and without distortion with headroom to exceed 106db at the mixing position and with even coverage throughout the full audience areas.

Main Console:	Avid Venue Profile (2) Stage Racks (5) Mix Engines
Powered Monitors:	(4) Anchor AN-1000 (2) EV model # ZLX – 12P (2) EV model # ZLX – 15 P
Power Service:	200 amp, 3-phase transformer. Isolated disconnect. Stage Right

House PA system

FOH Line array:	8x Q 1 + 1 x Q10 per side
Center Cluster:	9x V8 + 3x V12
Subwoofers:	4x J-Sub flown + 2x J-Infra ground
Front Fills:	6x E6
Orchestra Delay:	10x E6
Balcony Delay:	6x E8
Amplifiers:	(10) D&B D-80
System Control:	Remote Interface (2x Meyer Sound Galileo 616)

Other Speakers:

Monitors:	(2) UPA-1A (4) EvxW12 Floor Wedges
Microphones:	(5) Shure SM 57, (6) Shure SM 58, (3) Shure Beta 58, (1) Shure UP 88 Stero Mic (8) AKG C-535, (3) Sennheiser 421, (4) Audio Technica Uni-Point Podium Mics
Microphones Wireless:	(8) Shure UHF Handhelds w/Beta 87 Capsules (6) Sony Lavaliers w/MKE2 Microphones (6) channels of Shure UHF Handheld or lavaliers
CD Player:	(1) Denon DN- D4500 MK2 Dual CD USB Player
House Intercom:	(8) Headsets and Belt Packs

CS-200 4-channel main station
4 stations HME Wireless Com

Projection Booth: 8 Dedicated Lines

Video Monitor: FOH monitors located Stage Right and Stage Left
2 monitors on fly floor
Backstage paging system available.

Contact: Head Sound, Brian Kulvete
Booth (860) 987-5928
Cell (860)794-0990
Email:

DRESSING ROOMS

- All stage-right, with program feed and paging available

Stage level: Green Room/ Star Dressing Room with private lavatory and shower.
(DSL / Phone Available, room has a TV, small fridge and microwave))

Conductor's Room/ Stage Manager's room with private lavatory
(Phone Available, very small room)

2nd Floor: 202 1 room, 5-person (DSL/ Phone Available)
203 1 room, 4-person (DSL/ Phone Available room has sofa & small fridge)
204 1 room, 3-person (Phone Available)
205 1 room, 3-person
206 1 room, 3 person
1 lavatory with shower

3rd Floor: 302 1 room, 5-person
303 1 room, 4-person
304 1 room, 3-person
305 1 room, 3-person
306 1 room, 3 person
1 lavatory with shower

4th floor: 1 room, 10-person with sink
1 room, 14-person or wardrobe room with sink
1 lavatory with shower

5th floor: 1 room, 14-person or wardrobe room
1 lavatory

Under stage: Wardrobe room with 3 washers, 2 dryers and deep sink
Dressing room 10-person with sink (Wig Room)

Production offices: Located in Basement
Room A- 13' x 15'
Room B-13'x 8'
Both room wired with phone & internet

FILM PROJECTION

Movie Screens: 1- 22' x 41'

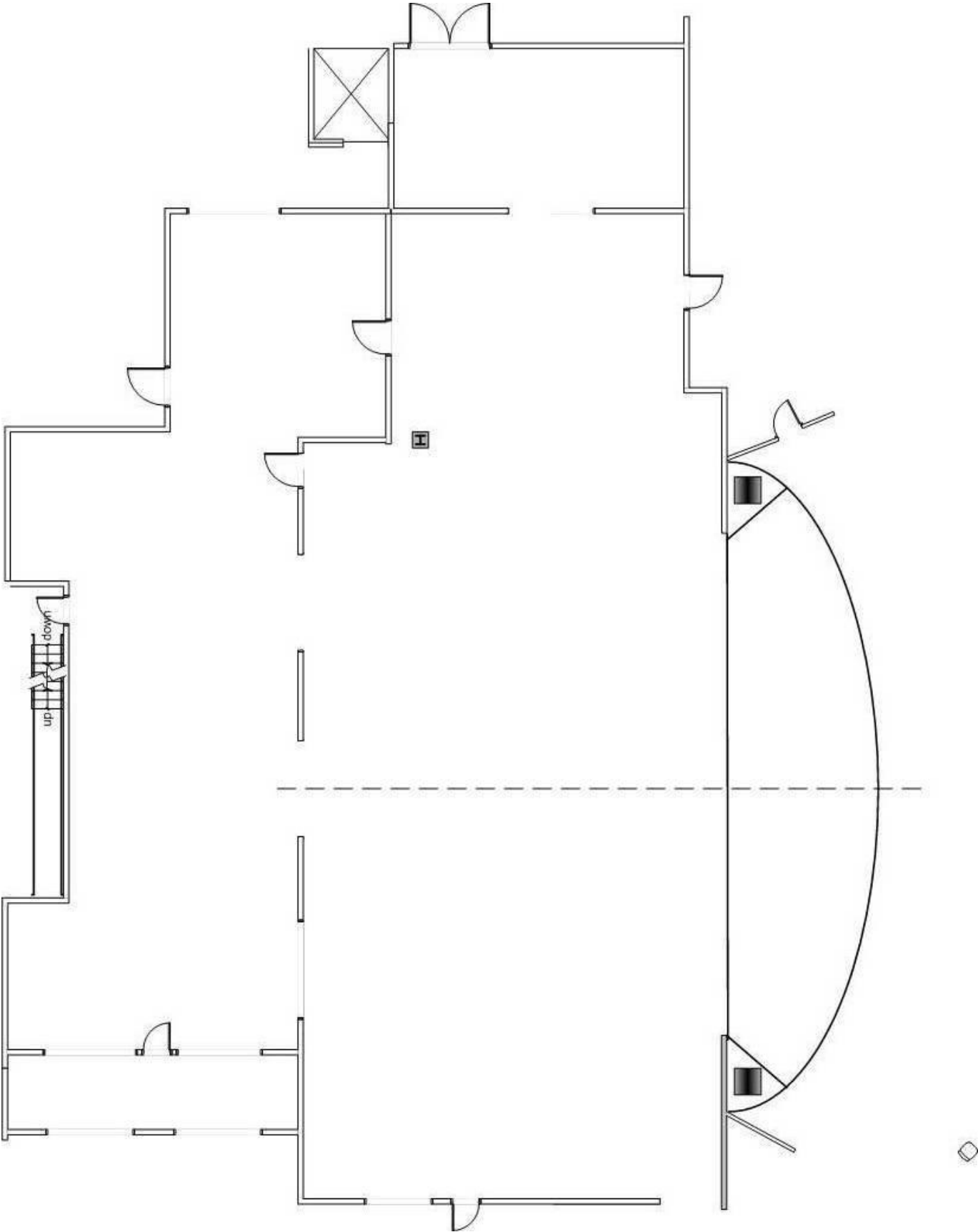
Projectors: 1 - 16mm projector: Eastman, Model 25B with Christie
2000-watt xenon lamps
2 - 35mm projectors: Century, Model HH with ORC
4000-watt xenon lamps

Projection Platform: Off Front of Mezzanine
9' long x 3'4" wide

Distance from Spotlight/Booth to Plaster Line: 157'

- *Projection booth distance to stage approximately 200'*

STAGE PLOT



LINE SCHEDULE

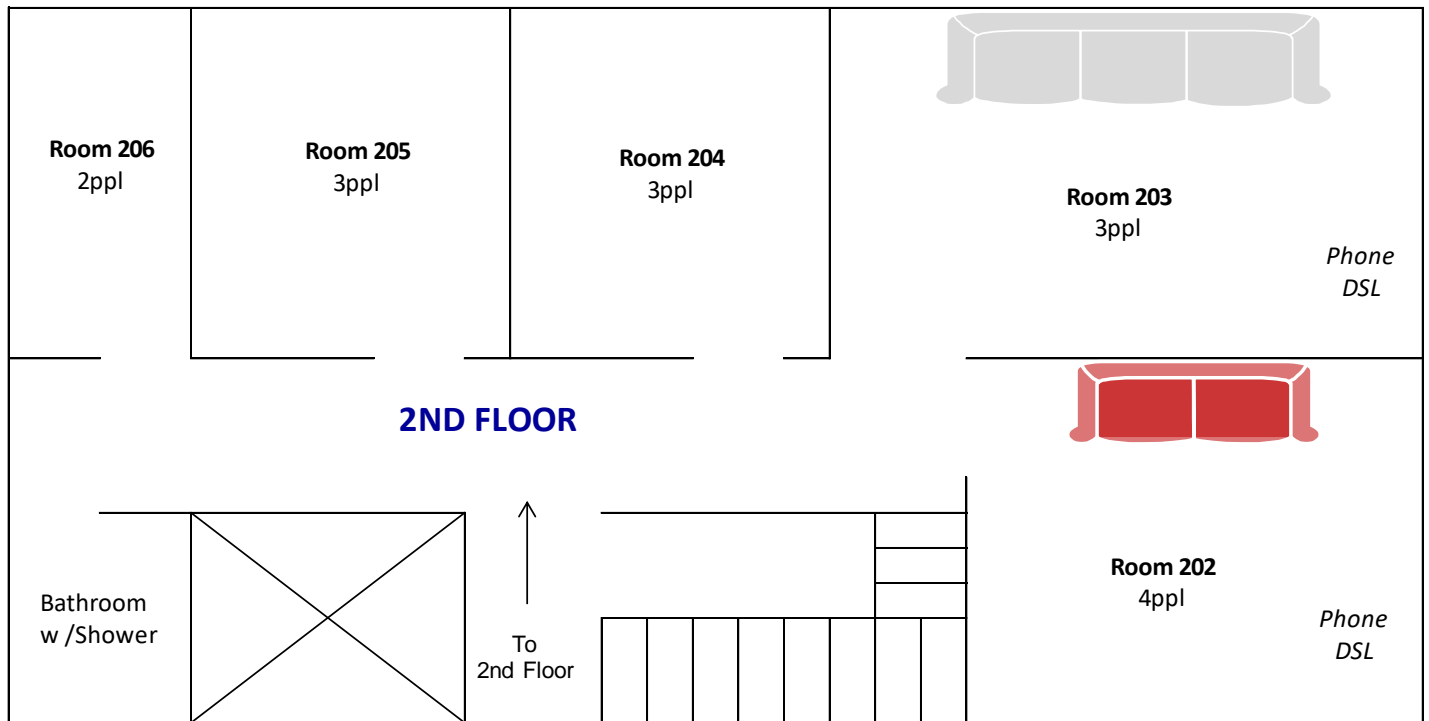
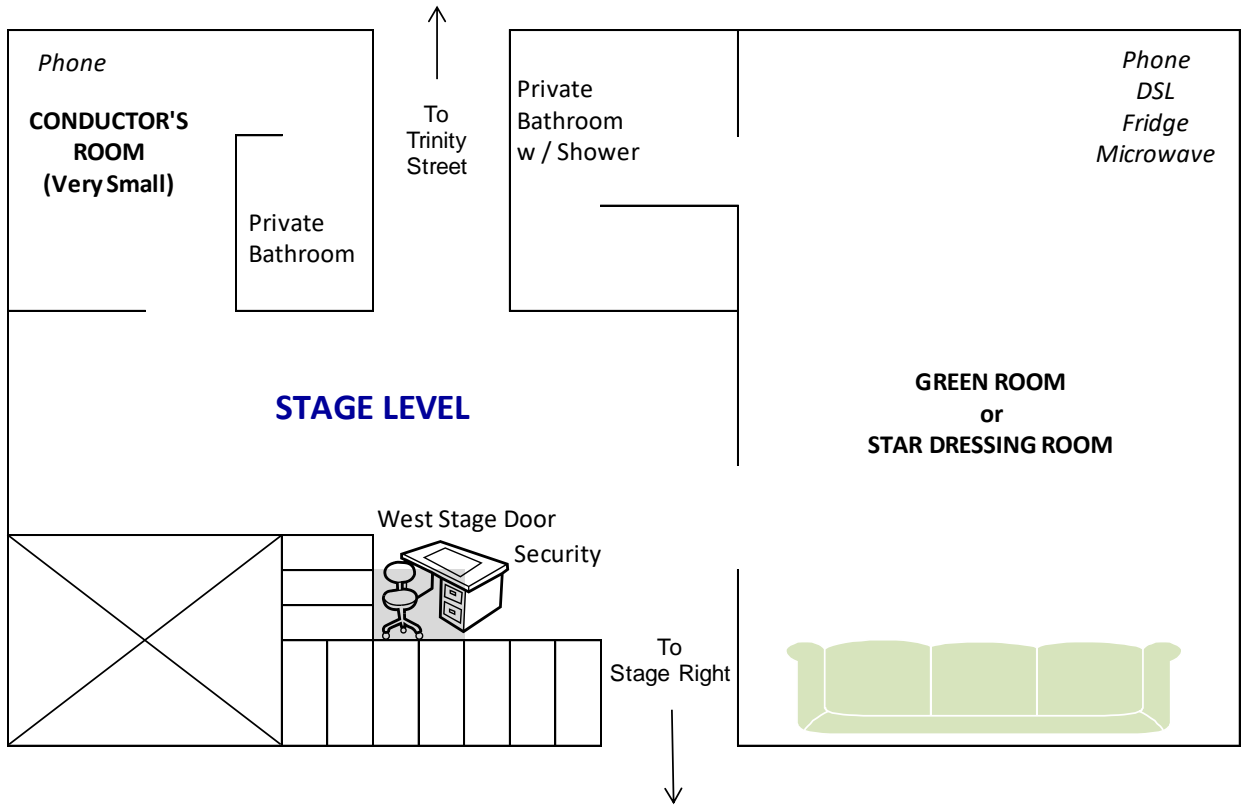
HOUSE	SHOW	DISTANCE	DESCRIPTION	WEIGHT	NOTES
LINE SET	LINE SET	FROM 0'-0"			
H/C		1'-0"	HOUSE CURTAIN		
1		1'-7"	<i># 1 Symphony lights</i>		
2		2'-4"	<i>house portal legs</i>		
3	;	3'-0"			
4		3'-8"	#1 HOUSE ELECTRIC		MAX. WEIGHT 600 lbs
5		4'-4"			
6		5'-0"			
7		5'-8"	#1 SYMPHONY SHELL		
8		6'-4"			
9		7'-0"	<i>#1 house border</i>		
10		7'-8"	<i>#1 house legs</i>		
11		8'-4"			
12		9'-0"			
13		9'-8"			
14		10'-4"	<i># 2 Symphony lights</i>		
15		11'-0"			
16		12'-4"			
17		13'-0"	<i>#2 house border</i>		
18		13'-8"	<i>#2 house legs</i>		
19		14'-4"	#2 SYMPHONY SHELL		
20		15'-0"			
21		16'-4"			
22		17'-0"			
23		17'-8"			
24		18'-4"			
25		19'-0"	<i># 3 Symphony lights</i>		
26		19'-8"	<i>house border</i>		
26A		20'-4"	<i>house legs</i>		
27		21'-0"			
28		21'-8"			
29		22'-4"			
30		23'-0"	#3 SYMPHONY SHELL		
31		23'-8"			
32		24'-4"			
33		25'-0"			
34		25'-8"	<i>house border</i>		
35		27'-0"	<i>house legs</i>		
36		27'-8"	<i># 4 Symphony lights</i>		
37		28'-4"	<i>house black drop</i>		
38		29'-0"			

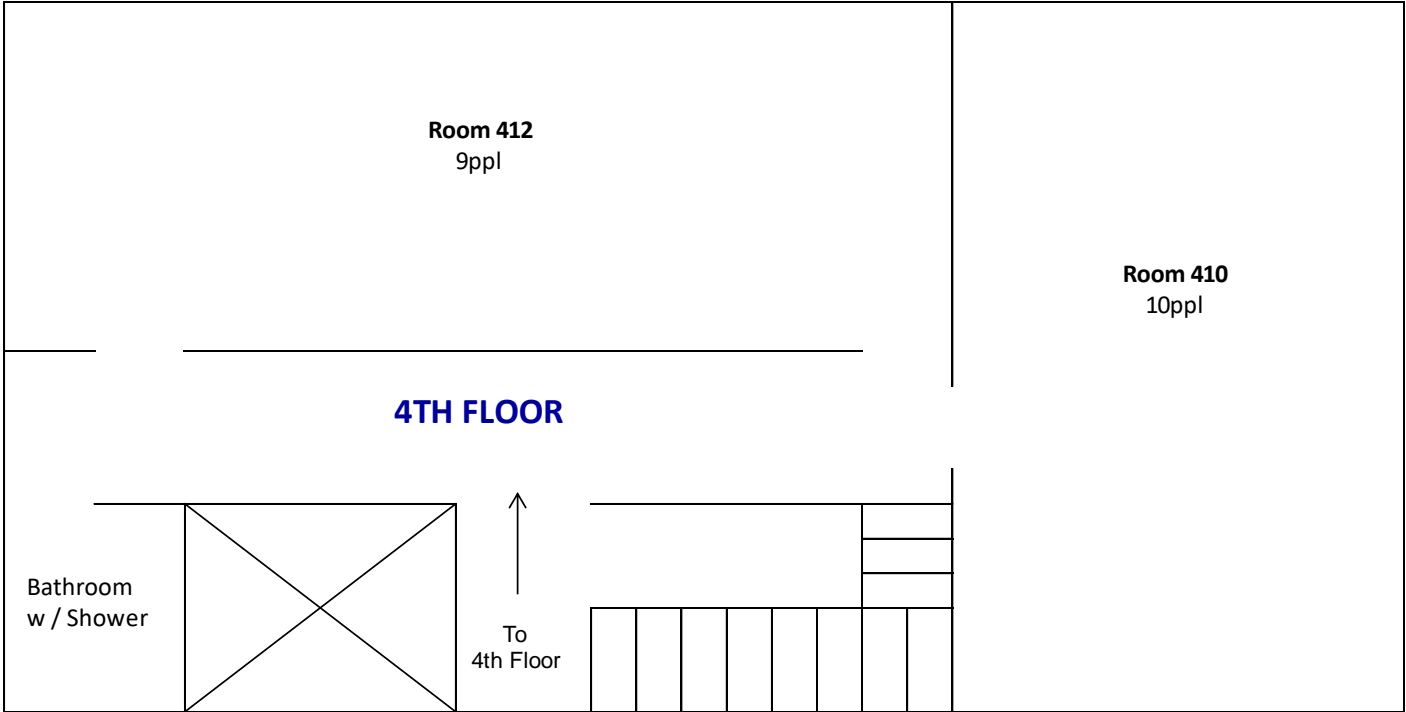
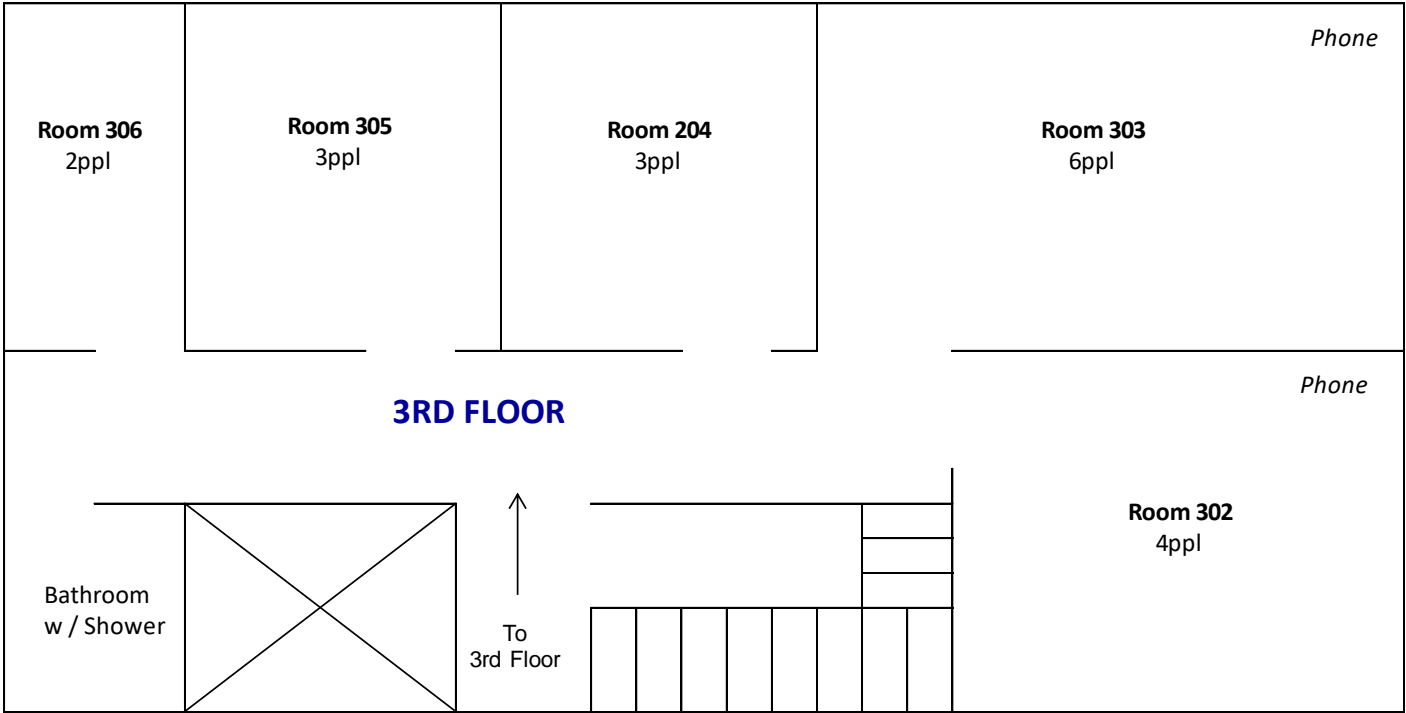
39		29'-8"			
39A		30'-4"			
40		31'-0"			
41		31'-8"	#4 SYMPHONY SHELL		
42		32'-4"			
43		33'-0"			
44		33'-8"			
45		34'-4"			
46		35'-0"			
47		35'-8"			
48		36'-4"			
49		37'-0"			
50		37'-8"	Traveler Track (storage)		
51		38'-4"	Movie Screen (storage)		4 line set only/ 48' pipe lenth

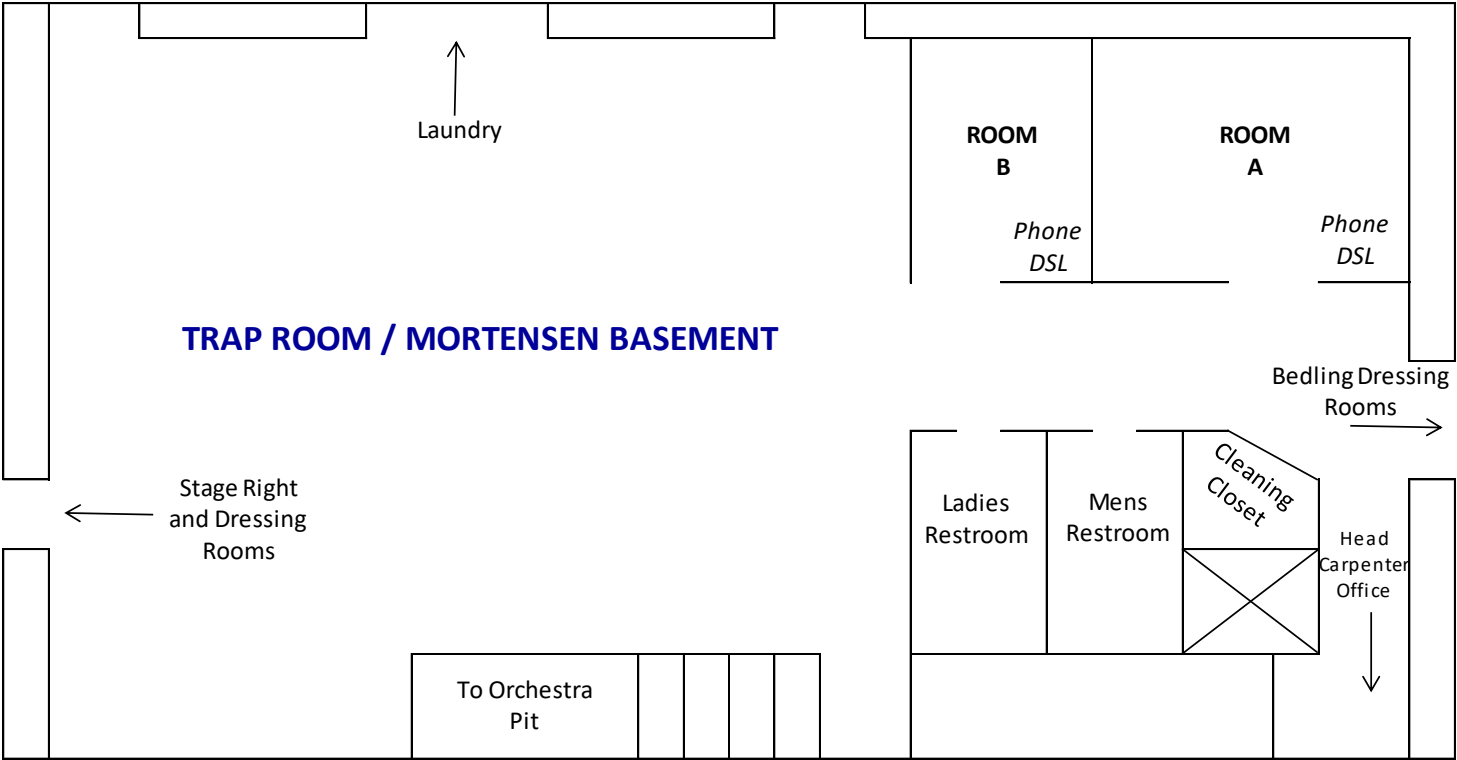
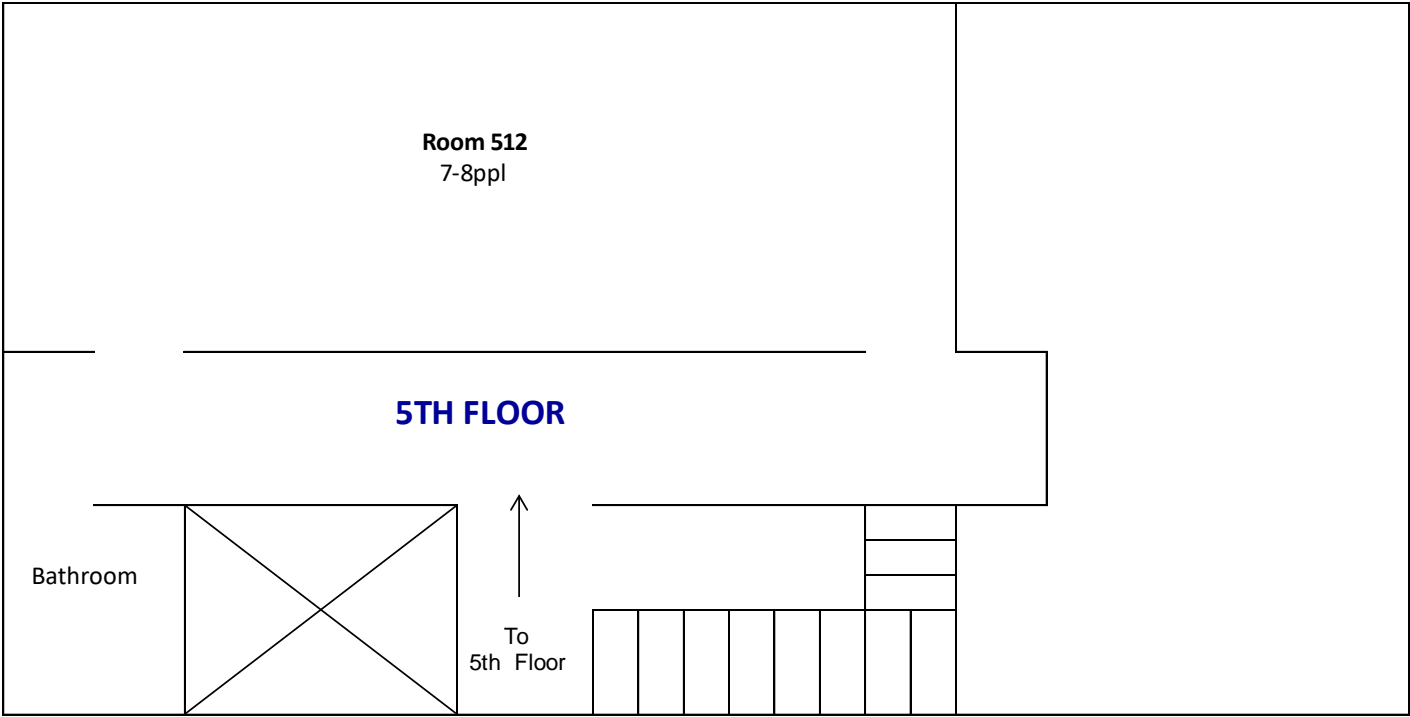
NOTE : 0'-0" MEASUREMENT IS TAKEN FROM PLASTER LINE @ SMOKE POCKET

1. Symphony shells & Lights can be moved, or, if needed, taken down and stored.
2. Single spot lines and sheaves are available.
3. Movie screen can be moved but must be stored in the air.
4. The counter weight system is double purchase with 65,000 lbs. of available counterweight.
5. Arbor capacity's are all 1000 lbs at pipe end.
6. Lenth of system pipe 60'-0" and all schedule # 80.
7. Run of pipe is 62'-0"

MORTENSNE HALL
Dressing Room
Layout

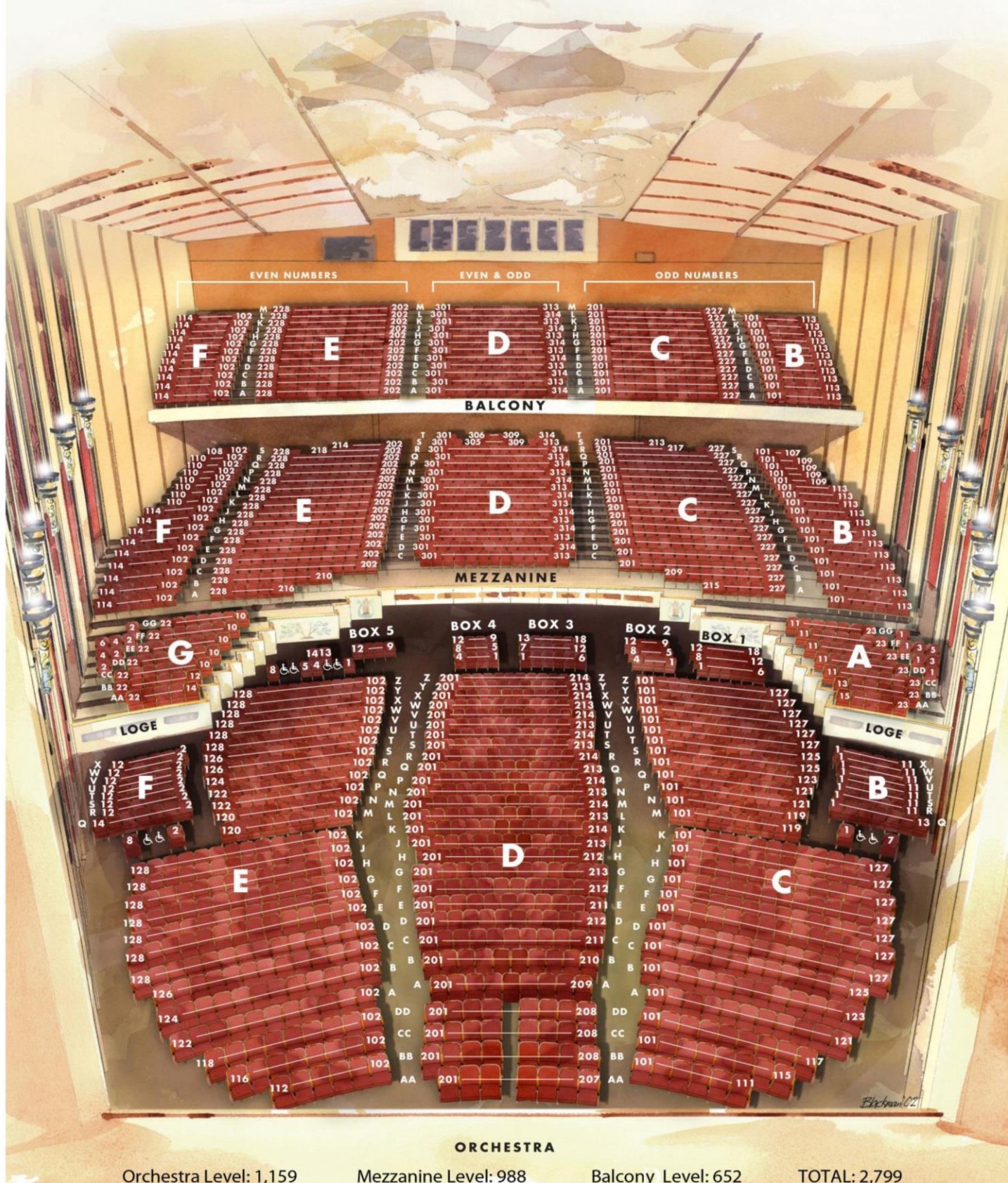






WILLIAM H. MORTENSEN HALL

THE BUSHNELL CENTER
FOR THE PERFORMING ARTS



Orchestra Level: 1,159

Mezzanine Level: 988

Balcony Level: 652

TOTAL: 2,799